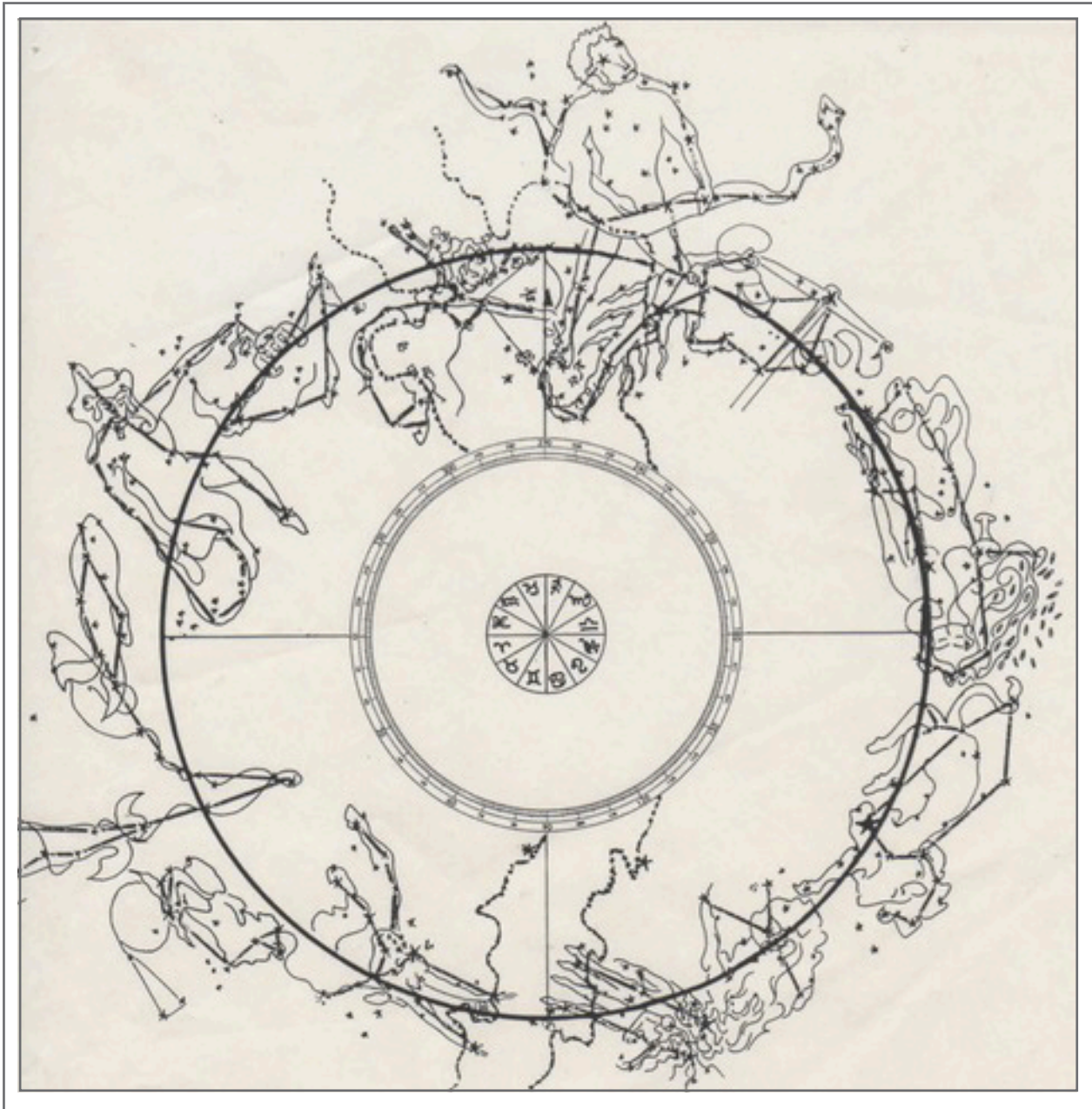




Terra Navis ~ Crew Notes

• *as the mother ship shifts into high seas* •

Volume I



Terra Navis ~ Crew Notes	1
<i>As the mother ship shifts into high seas</i>	
Terra Navis ~ Invitation	5
<i>Follow-Up: Crewing on the Mothership</i>	
Crew Notes #1	13
<i>Getting Up to Speed</i>	
Crew Notes #2	19
<i>The Andromedan Look</i>	
Crew Notes #3	29
<i>Tug Lines, Doldrums, BEMA in Flux?</i>	
Crew Notes #4	41
<i>Divine Alchemy, Perigee Surge Aug 2, Comet Elenin</i>	
Crew Notes #5	53
<i>Psychic Eruptions, Sacred Anger, Avataric Experiment, and More</i>	
Crew Notes #6	67
<i>Chained Humanity, Current Events, Russian Revolution, Call for Volunteers</i>	
Crew Notes #7	73
<i>Solioonensius, Madness of Crowds, Continuing Anomalies</i>	
Crew Notes #8	89
<i>Steady as She Goes</i>	
Crew Notes #9	95
<i>Apogee Surges, Looking Ahead to 2012</i>	
Crew Notes #10	103
<i>The Sorrow of the Mother</i>	



Terra Navis ~ Crew Notes

• *as the mother ship shifts into high seas* •

6/28/2011

SPECIAL REQUEST FROM JOHN LASH

Hello to Friends and Allies,

It is not my style to send out mass emails so this is a one-time event. The next mail you receive from me will be an invitation to join an email list consisting of those who want to crew on the mother ship, sailing with Sophia's correction. I will explain the opportunity and requirements in full in that forthcoming mail. Responding YES to the invitation puts you on the list, otherwise I will not contact you again with current material on how we are now actually, physically, astronomically living the Sophianic vision story.

Right now, I would like to ask all of you to listen to the 4-minute clip below, concerning observations around the world of anomalies in the sun, moon, and, I would add, the stars. So far no one has mentioned the pole star being out of place, which I have observed repeatedly and had confirmed by two others so far. You can bet I will be sending that tip to theintelhub.

Meanwhile, may I ask you to report any observations you have made recently or heard about along these lines? I want to accumulate a data base. I would guess the strangeness is just beginning.

Can you imagine that the earth is a self-propelling celestial body now taking her own course through interstellar space, wobbling a little as she turns against the currents and encounters high seas — yet keeping the cargo and passengers safe and sound?

This would be my explanation in nautical terms for the anomalies we are now seeing, which I expect to increase to a huge extent and become frequent and massively obvious. These events will be inexplicable within the archontic / mechanical framework of modern science, astronomy, and astrophysics. So far we have all been habituated to the expectation that “earth changes,” if they come, will produce catastrophic upheavals, tidal waves, mountains crumbling, with widespread destruction of life. We are a fear-ridden species when it comes to what might happen to the planetary habitat. And such events may well happen, but keep your minds open to the possibility that something may also happen simultaneously, and in parallel. Namely, that the mother ship can navigate as she likes, shifting across strong currents and through high seas, and provide safe passage for all aboard who participate in her celestial journey, by sharing her story.

<http://theintelhub.com/2011/06/25/the-shift-is-about-to-hit-the-fan-shepard-ambellas-earth-shifting-observations-confirmed/>

It appears that some people in the alternative media are beginning to collect data and reports on anomalies due to the self-propelled shift of course of the earth in the star stream of the galactic limb.

The events I can report so far are:

- sun rising at an unusual angle displaced to the north
- sunlight appears northwards of the actual rising disk, before the sun itself clears the horizon
- gain of light happening dramatically in early January
- light of the sun is enamel white and exceptionally hard — yet I also saw a sunset on St. John’s day in Belgium with the sun a soft, buttery amber and glorious soft luminosity around it, recalling the Organic Light
- inexplicable roaring and rumbling from within the earth reported around March 2011, connected to the correction of the wisdom goddess who at that moment re-established two-way communication with the Pleroma, the galactic center
- the moon did not appear at all on the second night after the June full moon (observation in Belgium)

- the north star Polaris is displaced downward from its well-known alignment to the pointing stars in the Big Dipper
- Coma Berenices (the Virgin's Hair) has been visible to the naked eye: this is an area of dense population of external galaxies far out of the range of naked-eye observation
- here in Spain for three days the sky is impeccably clear like a crystal bowl, with a sense of suspense or deep serenity pervading the atmosphere, not a cloud in sight, not an airplane seen for three days (so far)!!! As if I were living on a planet with no air traffic or air pollution. But what planet is that?

Please remember this list, and keep it current by adding your own observations with date and place.

thanks,

JLL



Terra Navis ~ Invitation

• *Follow-Up: Crewing on the Mothership* •

7/3/2011

*Friends and Allies,
Prospective Crew on Mothership Earth*

This email is the formal invitation to crew on mothership earth in the course of Sophia's correction. It explains what I do on the navigation deck and what I ask of the crew.

I am not disposed to use mass email tactics and I am not looking to build subscribers or gather a cult following. There is no profit angle to this adventure. It may however offer a certain edge on sanity that you might not come across elsewhere. To cut to the choice, the adventure goes like this:

Gnostic seers of the Mysteries developed a complex and coherent planetary myth, the Sophianic vision story, as a narrative tool to guide humanity in coevolution with the living earth. They left the myth open-ended, foreseeing a moment in the future when the "fallen goddess" would achieve her "correction" (alignment with the galactic center?), but they did not define how it would happen. I am proposing that the moment for that event is now. Since March 19, 2011, Sophia's correction is underway. I propose to plot this event by a nautical metaphor, but it is not merely a metaphor. Anomalies in both the geophysical and astrophysical realms can viewed as evidence that the earth is now assuming a self-directed, self-propelled path through interstellar space. Tracking that course is the mission of those who stand on the bridge with the captain of the mothership, Gaia-Sophia. This process is vast and fast. The mood and scope are oceanic.

Sophia's correction is a journey in imagination coordinated with personal and public events and phenomena in real time, the full spectrum of planetary shift including the spontaneous mutation of our species. To sail in the company of the Wisdom Goddess is a privilege and a thrill, the supreme adventure of this mythogenetic moment of ours, signaled 45 years ago by Joseph Campbell.

Many of you have already responded YES to this opportunity. No need to reply again: you are on the master list. Others on the BCC list of this email have yet to respond.

After this mailing I will selectively delete all addresses that have not replied YES.

If you get mistakenly included in the master distribution list, a simple NIX to me will deselect you. No need to explain anything.

Please note that communications among the crew come to navigator@metahistory.org. Use **jll@metahistory.org** for all other correspondence, as usual. The first mailing of navigational notes to the crew goes out on Wednesday, July 6, 2011.

Whatever your decision, to join the crew or not, may you remember each in your own way and timing, that you are indeed on the encompassing journey of this planet and not just on your own unique path in life. Separation from the source of life is a common illusion.

I extend huge thanks to those who have responded YES so far, and with such alacrity and respect. I strongly want to respond individually to some of you who have written me recently, and plan to do so in the near future once the crewing routine is up and running. In one reply, I am jokingly addressed as captain. Be clear that the captain is Our Mistress of the Starry Seas, Gaia-Sophia, who is also the vessel she commands, the planetary barque. Captain and nautical craft are one. The journey underway, although it needs to be imagined and metaphorically stated, is truly observable and verifiable. Gaia's voyage up the galactic stream in the starry seas is both a real astronomical event and a reality-driving metaphor. The Sophianic vision story of the Mysteries is the paramount myth to guide the human species. And that is such.

On the Bridge

But don't take my say-so on it. You can prove for yourself that this voyage is a conscious, self-propelled, and purposeful event directed by the living intelligence of the earth. In this invitation I am setting out what you will get from me and what I require for your participation on the bridge of mothership earth. Initially, you come to the navigation

deck as observers. You then find your way individually to certain self-assumed tasks and duties that suit you and reflect your innate talents, allowing you to express passion, inspiration, and ingenuity to the optimum. Observations to be made and reported by the crew fall into five categories:

- Cat 1:** earth changes such as are currently reported, cracks in the earth, interior rumblings, shift of the magnetic poles, etc
- Cat 2:** celestial changes such as moving stars, strange clouds, alterations of day and night, lights in the sky (excluding ET/UFO phenomenon and hoaxed events, Blue Beam, HAARP, etc), extreme and inexplicable weather, etc
- Cat 3:** chemical and biochemical shifts in nature and DNA, but not those caused by human intervention such as mutations due to GMO plants or chemical poisoning such as fluoride in the water. For instance, not radiation disease which is caused by human folly, but natural responses to it, remission, cures, and so on.
- Cat 4:** psychic anomalies, paranormal experiences including visions of a White Woman or white animals, epiphanies of the Organic Light, encounters with spiritual guardians and protectors. “Spiritual emergencies,” to use the term of Stan Grof.
- Cat 5:** “scientific discoveries,” breakthroughs in research, and breakdowns of the current paradigms of science. I emphasize that in correction the entire framework of science, astronomy, physics, biology, biochemistry, genetics, etc, collapses. The archontic lie of celestial mechanics, assumed rigidity of the planetary orbits, the primacy of gravity, the threat of coronal mass estring theory, black holes, — all of it collapses in the blink of an eye. Plasma cosmology, the electric universe, and the expanding earth are clearly the emergent paradigms that fit Sophianic cosmology.

Already, just three months into correction, many anomalies and paradigm shifts call our attention. They are due to continue, multiply, and become more diverse and astonishing. The startling anomalies, cosmic and local, astronomical and biological, indicate how the earth is self-correction as it assumes a self-directed course along the vast waterway of the galactic arm.

I request that the crew report on phenomena in the five categories. Initially, that is all you are required to do. As you get a feel for navigation, you will gradually learn some naked-eye astronomy (nothing complicated, no math required), follow the apsidal surges of the moon each month, and consider the mythography of the zodiac and heavenly constellations as I bring this imaginative material to your attention week after week. In Gaian navigation by the stars we use this simple method of complementation: OBSERVE and IMAGINE.

I do not have to tell you what to observe. Like the rest of the world, you cannot fail to notice the anomalies and diverse changes now transpiring on earth and in the heavens simultaneously — not to mention in the depths of your own lives. But I can show how to weave the imaginative component into your observations, thus demonstrating the “creative mythology” proposed by comparative mythologist Joseph Campbell about 50 years ago. I call this practice **applied or directive mythology** and insist that it be propagated in Gaian terms, framed rigorously in the Sophianic vision of the Mysteries. This practice (Planetary Tantra) is not just a theoretical attempt to achieve what Campbell proposed; it is the actional fulfillment of his proposal accomplished and demonstrated at warp drive.

MESSAGE PROTOCOLS

My role is to keep the crew on course with the captain’s log as the journey of correction unfolds in real time. Navigation can be tracked by the shift of the lunar apsides (perigee and apogee) in the constellations. I will signal the apsidal moments (“surges”) and present the relevant zodiacal material or mythography. Your mission is to read and absorb, contemplate, observe, pose questions, offer comments, etc. I have never managed a large mailing list before and would like to keep the process as simple as possible. Please follow these guidelines:

REPLY TO ALL with observations in the five categories, reporting anomalies and notable phenomena that are due, or likely to be due, to course correction. Keep messages clean and lean: no extraneous material, no irrelevant YouTube clips, no favorite music bits, no lols or high fives or cutesy remarks, no flip quotations, Facebook links or smiley faces, etc.

Absolutely NO personal chatter on the bridge.

No allusion to anything in your life that does not bear clearly and directly on navigation.

REPLY TO ME ONLY if you are in doubt about the relevance or appropriateness of an item, or if you have any question about how we're proceeding, a need to clarify some point or technique or mythological material, etc. I reserve the option to keep the exchange between us to us alone, or post it for the entire crew to see. Leave that decision to me, thanks.

If you want to communicate at more length person-to-person or chit-chat one-on-one, please do so outside the message sequences that pertain to navigation.

As a crew member, you are also required (sooner or later) to learn the Sophia myth and hold it intact in your memory. This is after all the sacred narrative that uniquely presents the planetary event of correction and guides us into it. Most of you know that the Maine tertion is the only Gnostic scholar to have recovered and restored the Sophianic myth of the Mysteries. To my knowledge, the "fallen goddess scenario" is **THE sole complete and coherent planetary myth known to our species**. Currently there are three spoken versions of the Sophianic vision story on line, including the prose poem version:

Thomas (9 episodes) :

<http://www.blogtalkradio.com/grok-the-talk/2011/02/28/the-fall-of-the-wisdom-goddess-a-narration>

Stephanie (9 episodes) :

<https://files.me.com/sainsworth/62cy1z.mp3>

Terri (8 episodes, incomplete prose poem version with montage) :

<http://www.handmade-hope.com/the-gaian-fallen-goddess-story-full-movie.html>

Enjoy the Journey

Are you ready to live through correction in real time with the wisdom goddess herself? This is the opportunity now open to those who are disposed to undertake this experiment with me, with minimum rules, easy requirements, and absolutely no hierarchy, no dogma, no metaphysical cant, no authoritarian strictures, and no ungrounded fantasias of cosmic order. There is no ranking in the navigational crew but you may come to be arranged by your skills, inspiration, and the depth of your engagement.

For fullest participation in this planetary venture I strongly encourage you to take the Gaian Tantra Vow, and make this experiment the highest priority of your attention. Those who have not taken it so far can do so in specific language stating your commitment to navigate with Gaia-Sophia. In other words, frame the Vow in terms of your intention to partake in her correction. Those who have already taken the Vow can renew it along those lines as well. I request that you submit formulations of the Vow to be posted on metahistory.org as examples to others who may join the crew as correction proceeds.

Crewing may not necessarily be held as the highest priority of your life — I would not impose such a heavy demand — but certainly it can be the highest priority of your attention. Live as you like and must, but hold navigation with Gaia above and beyond all other issues or concerns in your mind. Do that if you can. Come to that attitude as soon as you can. Crewing on the mothership is not something you do on the side, or for a kick. It has to be central in your sense of how to live morally and imaginatively, in honesty and sanity, with a transpersonal purpose that can be tested and shared. And to live in pleasure and beauty. Don't do anything relating to this opportunity if you don't enjoy it.

Ten-Second Countdown

In nautical analogy, **June 24 - July 21, 2011** is the period when Gaia restores and tests her navigational system, including the engines of her memory. As her onboard systems come on line, she idles her huge motors and occasionally revs up the power. Can you sense a deep soft hum, like a tranquil lull around the earth at moments? Punctuated by the rumble of the occasional rev?

By July 21, the mother ship will have all her navigation systems up and running and then she engages her self-propulsion, full steam ahead. This event can be detected by anomalies at the biological, geophysical, and astrophysical levels. Such anomalies will be more than obvious to people all around the world, independent of any knowledge of the correction.

But on the bridge we have the opportunity to know what correction entails. There is no fantasy or fiction in what I am describing here. All of it can be experienced first-hand and verified by direct observation.

The Sophianic myth is the only story that routes your NLP to source, because it the only story **about** source that is both complete and coherent, and works as an open-ended, participatory myth. That, my friends, is a singular and irrefutable truth.

Whatever else it entails, crewing on the mothership is a great way to find out how intelligent you really are. A way to see if where you are going in life matches where life itself goes now with the next mutation of the human species, sailing around the bend of the galactic arm. Whatever your decision, to engage that mutation or not, to sail in her beauty or in the often beautiful illusion that allows you a sense of going it alone, I wish you safe passage.

JLL the Maine Terton

1 July 2011 Andalucia

Final day of the shift of Idris: "Physics is fate."



Crew Notes #1

• *Getting Up to Speed* •

7/10/2011

Greetings Crew of Terra Navis,

This is the first in the forthcoming series of Crew Notes. My apologies for a delay in getting this message out to you. I've had quite a few things to get in order on the navigation room before proceeding. Star charts and lunar cycle tables, etc.

On the schedule I would like to follow going forward in this journey, I will send out crew notes on the Fibonacci days of each lunar cycle: 3, 8, 13, 21. Starting on the third day and skipping day 5. That would produce four sets of notes each month. Right now, Sunday 10 July, I am two days behind D8 of this sequence. Next notes will come on D 13, etc. I'll do my best to keep to this rhythm.

The problem of run-on lines in the email seems to have been solved. Also, the address list appears to be sorted out, with some newcomers on board. So, all systems go.

Thanks also to all of you who have sent in clips and links. They are being evaluated and I will post some items in the next notes with my comments. I depend on your observations and clue but keep it close to the journey. On message, on mission.

In the nautical metaphor, I have said that the mothership is getting her onboard systems up and running during the period between June 24 and July 28 (two apogee surges).

These systems include communications onboard and outgoing (to the Pleroma: home port), her power turbines, steam engines and sails, and the engines of memory. She is testing these systems, getting all operations up to speed. During this time you can do the same: that is, catch up and/or review what I've sent out so far. Here are the relevant links:

<http://www.metahistory.org/GAIA%20SOPHIA/mythos/PostCorrection.php>

This is the portal to the POST-CORRECTION writings. One essay, the first entry in reading the captain's log, has an audio commentary attached.

<http://www.metahistory.org/sitemap.php#postsite>

This is the page in the site guide linking to all POST-CORRECTION material.

Here are links to the oral narratives of the Sophia myth:

Terri Stevenson (prose poem, Gaia Mythos)

<http://www.handmade-hope.com/gaian-mythos.html>

Stephanie Ainsworth (download 9 episode FGS)

<http://files.me.com/sainsworth/62cy1z.mp3>

Thomas Malone (9-episode FGS)

<http://www.blogtalkradio.com/grok-the-talk/2011/03/08/the-fall-of-the-wisdom-goddess-a-narration-without-embedded-music>

Finally, here is a link to the Gallery set up by Thomas Malone for PT, where you will find my reading of the Gaian Tantra Vow, and the YouTube clip of the rite of cording.

GTV and other material:

<http://gallery.me.com/ramwei>

You Tube:

<http://www.youtube.com/watch?v=HaZcozZ-7ys>

All the above is not necessary to get oriented for this night sea journey but it's there if you wish to consider it. It's background. I do urge you to consider doing the GTV if you haven't already.

For "homework" I request that everyone watch this clip on Hubble deep space imagery:

http://www.youtube.com/watch?v=mcBV-cXVWFw&feature=feedrec_grec_index

There are some spectacular photos on this clip as well as some equally spectacular examples of scientific arrogance and ignorance in the commentary. For instance, the presumption of knowing where the universe ends, how old it is, etc. Also the assumptions of the speed of light and redshift, currently being demolished by the Sophia-friendly science of plasma cosmology.

Learning basic astronomy is of course one of your onboard responsibilities. I have always maintained that the astronomy we need to know to sail with the planet is simple and elementary. There is no requirement whatsoever to get your head around the numbers scientists use, or to embrace their fantastic notions of cosmic origin and order. Just stick to what makes sense. For instance, I would say that it makes supreme sense to say that the Universe never began. It is an event without a beginning. Stand before that idea and contemplate it in wonder. Step yourself in that fantastic notion and you can totally ignore the vain prattling of experts who have to justify their titles and jobs by preposterous claims, pretending they know when the Universe began!

The astronomy required of the crew is simple and direct, something a high school student can easily master. It is also participatory, and verifiable by direct sense perception. You do need to be able to visualize the planetary system in the galactic arms. That is the primary visual and imaginative orientation for the journey. Let me know how I can assist with that item. We will not use computer modeling or simulations except in a provisional and temporary manner. These prosthetic devices impede direct participation in the dynamics of Gaian physics.

You are invited to a fabulous experiment in which a metaphor will operate like a winch: the winch pulls you into the rigging of the ship. The metaphor of Gaia's journey on the starry seas — which is of course not just a metaphor — allows you to exercise your imagination of the journey in the very act of bringing that journey to life. I am sharing with you a momentous discovery of my gnostic and mystical life: the correction of Sophia, when it happens, when it finally kicks in, is an astronomical event to be lived in real time on earth, and lived in such a way that we track in imagination how it unfolds, and simultaneously, the geophysical and astronomical unfoldment of the journey reveals itself, proving that what you imagine is true, real, veracious. And that it can be shared and celebrated and, to a certain extent, pre-visualized, charted.

My goal is, by January 2012, to present in crew notes a fully charted preview of the three-three correction. This does not mean that I can predict how correction will unfold. I can't. Nor can I foresee the process, but I can chart along the trajectory of

correction, navigating by the stars along with the mothership. Doing so, I can provide the imaginative components for you to integrate into your own lives as the journey proceeds.

Gaia's process is vast and fast. 108 days of human time is 1 second in her awareness, one second of Aeonic duration. The vastness of her attention is such that in 1 second she encompasses all that a human mind at its highest potential of attention can do and realize in 108 days. Correction proceeds in about 1080 days from March 19, 2011. That is, about three years. 10 seconds to the planetary animal mother. She makes her correction in 10 seconds, and thereafter the earth holds to the course she has set. To crew on the mother ship is to go through this process consciously and to realize and comprehend both imaginatively and astronomically, how she is setting her course, how she navigates. how she tacks across the galactic currents, how she sets her compass by certain pilot stars, how she carries the entire solar system with her, the entire fleet...

Our task is to follow correction second by second. From March 19, 2010 correction is in countdown: 10 seconds, 9, 8...

July 5, 2011 was day 108 after correction. The end of the first second. since that day we are in second 9 and counting.

Just imagine how that feels, hnow it plays out: to live in correction with Gaia-Sophpia one second at a time.

That's it for now. All good regards and safe passage,
your nav

.....

PS to Crew Notes #1:
• Inuit Testimony of Earth Shift •

6/28/11

Hi Crew

Forwarding a link to a YouTube clip submitted by a crew member. Here is crystal clear testimony from an indigenous people, the Inuit, that the mothership is shifting around in the cosmic waters. Listen carefully to how they describe the anomalies. Then pick up my comment below:

<http://www.youtube.com/watch?v=I5UIFTP-D1E&feature=email>

Inuit People On Sun Wrong , Stars Wrong, Earth Tilting On Axis

<http://www.youtube.com/user/migfoxbat>

MIRROR PERMISSION GRANTED

“Fair Use” Disclaimer: 17 U.S.C. Notwithstanding the Provisions Of Sections 17 U.S.C. @ 106 And 17@ 106A, The “Fair Use” Of A Copyrighted Work, For News Reporting, Comments, Criticism, And Educational Purposes- Not For Sale- Non- Commercial.

COMMENT: The sun rises or sets elsewhere, the pole has shifted. The north wind used for visual orientation of the snow drifts has given way to the south wind, and the prevalent wind comes now from the east. Imagine a sailboat tacking around in heavy seas. As she does so, the mast bobbles. It does not point to one fixed place in the sky, but jerks around. I have said that with correction Gaia takes a course southward, diving into the southern skies. She descends slightly into the galactic starstream, orienting toward Canopus in Argo Navis. The south wind increases and displaces the north wind, in the most extreme regions of the north where native people can observe the change.

At the same time, they report a prevailing wind from the east. The direction east in terms of the mother ship is port (left side of a boat). From the Inuit report I gather that the mothership is charting a new course on a southern decline into the starry waters, diving down into the stream, and veering slightly to port or left, relative to how the sun goes by proper motion. In other words, the current tack is away from galactic center, which is always to right, starboard. The current tack brings the mothership around in the direction of the outer edge of the galactic arm marked by Centaurus, visually off to the right or west of Canopus.

By the way, Canopus cannot be seen in the northern hemisphere above 20 N latitude or so. This is not exact, I will check. Anyway, we rely on southern members of the crew to keep an eye on Canopus.

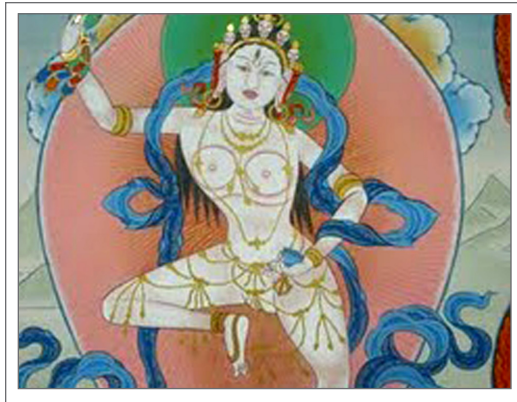
.....

Correction of apogee surge 1 July

7/10/2011

Correction in CN #1: next apogee surge would be July 21, not 28.

In the nautical metaphor, I have said that the mothership is getting her onboard systems up and running during the period between June 24 and July 28 (two apogee surges). These systems include communications onboard and outgoing (to the Pleroma: home port), her power turbines.



Crew Notes #2

• *The Andromedan Look* •

7/14/2011

Greetings Crew!

Today is day 13 of the current lunar cycle that began on July 2 under the Gaian Dakini, the Diamond Sow Vajrayogini (Tantra Mother). Observation of the lunar cycles and transcription of dakini wisdom is a practice of Planetary Tantra. So far I have not introduced this practice into the Gaian navigation experiment underway but I will allude to it, if and when appropriate.

Crew notes go out on days 3, 8, 13 and 21 of the lunar cycles. Skipping 1,2 and 5 which I reserve for my own practice of transcription, a ritual that requires close and acute attention.

Thanks to all of you who've written and reported on anomalies and related matters, some of which are referenced in this message. If any of you recently added to the list did not receive crew notes 1 just let me know and I will provide it for you.

By way of a quick review: correction began on March 19, 2001 at the supermoon on that date, a week after the Fukushima event. Some of you may recall at that time reports of strange sounds coming from the earth, including a continuous drone from a cave in Tibet. People in Florida USA, Essex UK, and elsewhere reported hearing inexplicable rumbles from the interior of the earth. Who knows how many similar events may have occurred that were not reported?

I have proposed that at that moment and in the days just preceding and succeeding, the barycenter of the earth-moon exceeded the speed of sound. Sending out a prolonged sonic boom from the interior of the earth. There are reports of stupendous manifestations of light around the same moment — at Mauna Kea observatory of Hawaii, for instance:

<http://asterisk.apod.com/viewtopic.php?f=29&t=24251>

This anomaly can be interpreted in a couple of ways. In the nautical metaphor, I suggest the metaphor of a bull horn blaring on the bridge of the mothership, calling crew to the navigation deck. I also proposed that at that moment the earth established a two-way signal connection with the Pleroma, the galactic center. The terrestrial rumble was of course not that signal sent to the galactic core, as sound would take thousands of years to reach there (according to the current paradigm of astronomy, anyway — more at 11). But it was the onboard announcement that the outbound connection had been made.

By another angle, the sound/light signal can be said to represent the unlocking of the self-directional mechanism of the earth, the lunar apsidal line pivoted on the barycenter. This is the steerage, the helm-rudder hook-up of the mothership. Previously this steerage mechanism had been locked in place, on autopilot mode. Unlocking it, the mothership begins to navigate her own course in interstellar space. The captain takes the helm.

On autopilot Sophia used Deneb in Cygnus the Swan to direct her toward the galactic center: the Swan flies across the dark rift of the Milky Way, banking down like a 747, directly toward the galactic center. Coming off outo-pilot, Gaia takes Canopus in Argo Navis for the main star to orient her current course. This light lies deep in the southern skies. As mentioned in the previous notes, the change of course coming out of auto-pilot brings the mothership into a slow plunge downward in the starstream of the galactic spiral arm. This produces a corresponding anomaly of shifting the sun in the north hard north, an effect noted by vast numbers of people.

Simultaneously, the pole star appears displaced some nights from its close alignment to the two stars in the Big Dipper. This anomaly is observable but inexplicable in astronomical terms. It simply cannot be happening in that paradigm. In the nautical metaphor, it is happening and cab be verified by observation: the main mast of the mothership wobbles back and forth on a vertical pitch as the earth settles deeper into the galactic currents.

* * * * *

As first navigator, nav.1, I will be tracking the apogee and perigee moments of the lunar cycle which I take to indicate directional shifts of the steerage as Gaia tacks into the galactic currents: call them the momenta, plural of momentum. March 19 was a perigee moment (or “surge,” in terms of the energies of the Shakti Cluster). Since then there have been four perigee surges (April 17, May 15, June 12, and July 7) and four apogee surges (April 2, April 29, May 29, June 24), the next apogee surge coming up on July 21, a week from today. By tracking where these apsidal moments occur visually in the constellations of the zodiac, I can chart the journey Gaia-Sophia is undertaking. In other words, I translate or convert the zodiacal mythography into terms of the nautical metaphor, as well as language by which the human mind can align to the planetary intelligence, following her designs and purpose as they unfold.

My role as navigator comprises the two main responsibilities of the nagual in shamanic practice: to steady the approach to the Unknown, and to define syntax. The gift of the nagual is freedom.

For syntax, I apply these key terms to the apogee and perigee momenta of Gaian self-steering: apogee = divine memory, perigee = divine alchemy.

At the apogee moments Gaia-Sophia recapitulates her own cosmic story, recalling the decisive mythological moments of her plunge, her encounter with the archons, her pact with the sun, the defection of the archons to the sun, becoming paralemptors (“receivers” who assist in the after-death bardos), her pact with humanity the anthropos, and so on. Every great episode of the Sophia myth. What the wisdom goddess recalls cannot be anticipated or invented or contrived by human imagination, but it can be tracked as she recalls it, in real time. As she revisits these moments, one by one, Sophia immediately realizes the direction to give to her journey relative to the total cosmic duration of her experience as an Aeon. This is divine memory in action. Or conative reenactment, if you want a fancy term. On March 19, the lunar apogee was located in 1 Aries, the first point of the tropical zodiac, beneath the tail of the western Fish. (See Whales.jpg attached.) It continues to advance through that constellation into 2012, marking the first phase of correction — that is simultaneously, recollection. The recapitulation of divine memory, traced from the lunar apogee.

Through 2011 in the first phase of correction, Gaia-Sophia recalls the part of her own story that has been preserved for her under special conditions in the memory of another civilization on another galaxy, M 31, Andromeda. Let me take a moment to describe this extraordinary situation.

When it was realized, at the moment of her plunge into earthly metamorphosis — not the departure from the Pleroma but the much later event of her epistrophe of transformation into the planetary body of the earth — the Pleromic aeons witnessing this event took a special measure to assist Sophia, based on the cosmic principle of mirroring. This principle allows that any sentient world system harboring a divine experiment that appears in a galaxy will have its mirror reflection or parallel world in another galaxy. The mirror world of life on earth is a world in the Andromeda galaxy, said to be located at 2.2 million light-years from earth. It is the most distant object visible to the naked eye. There is an actual, living, coexisting parallel world mirroring this one in every detail, including the inhabitants, all of us. We all have Andromedan doubles.

In their vast overseeing wisdom, which did not entail interfering in any way in Sophia's adventure, the Pleromic Aeons realized that the goddess would lose some part of her Aeonic self-awareness cue to total absorption in the process of becoming a planet and managing the symbiotic web of life-forms emergent on the planet. They recognized that micro-management of a planetary habitat, from the core to the clouds, would totally engage the Aeon so that she would temporarily lose a portion of her retentive memory of being an Aeon! The way I often put it is, Sophia became autistic. She had to assume the concentration of an autistic child to micro-manage the world she had become. Upon my first encounter with the Aeon Sophia in cognitive trance, I recognized this quality: the planetary Aeon is autistic.

By total absorption in the minutiae of planetary life, the Aeon suffered a loss of retentive faculties, a partial occlusion of her memory. Most significantly, she forgot a crucial factor in her cosmic adventure: the pact she made with the human race prior to her fall. In her preparatory dream of a three-body world where humanity (one strain of it, being us) would live out a divine experiment, she had included herself in the experiment — but not as a planetary body, for that was the anomaly that overtook her later. Rather, she included herself in a special and unusual relation to the emergent human strain in the world to come that she envisioned, factoring herself into the long-term plot of the experiment. Her inclusion in this experiment on earth takes the form of a pact. The wisdom goddess does not have a plan for humanity or the human experiment on earth. She does not think in terms of such plans, which are constructions male mastermind deities that might apply in other world systems, other planetary experiments, but not ours. She holds to a pact, not a plan.

As it plays out according to her designs, the divine experiment on earth is an adventure in cosmic novelty that cannot be planned or predicted in any manner. The trajectory of the plot can be charted, yes, but no plan can be defined for a conclusion to the plot. Beware of anyone, man or woman, but especially of any man, who claims to know the plan of the planetary Aeon, Sophia. It cannot be known in a human mental construct, and it does not need to be invented in order to follow the experience of the wisdom goddess as it unfolds, in real time. That is the art of charting her voyage, the Journey of Living Eternity.

So, due to intense immersion of her divine awareness in the multi-tasking micro-management of her planetary body, the Aeon Sophia forgot the terms of the pact she made with the anthropos in her pre-terrestrial dreaming. However, the Pleromic Aeons saw this happen at the moment it did happen. In a measure of compassion and support, they provided for the memory of that sacred pact to be preserved in the minds of human doubles on an earth-like planetary system in the galaxy of Andromeda, M 31. In that world, the Andromeda galaxy, this pact is remembered in a tribal narrative called the Legend of the Great Sigh.

When you learn the Sophianic vision story, you become a fractal replicant of the entire story. We do not each carry a thread of the divine myth, we carry each the myth entire. Like the fragments of a shattered hologram all carry the entire image of the unshattered plate. As bearers of the Gaian memory, or circuits in divine remembering, we can participate in her recall given that we are provided with prompts. That is what the navigational notes on the lunar apogee provide — prompts to your share of the divine recapitulation.

In shamanic terms, recapitulation is a rite of convergence with the double. Our Andromedan doubles hold the perfect and intact memory of the pact Sophia made with the human species long before even the earth existed. Due to a fail-safe principle rooted in the Originator, the memory of the perfected end of any experiment is never lost, not for a moment. Now go to your own memory of the Sophianic vision story and you will recall this plot factor: The Originator wishes that all that happens in the Pleroma be accomplished by a dyad, a syzygy, a coupling of Aeons. As occurred with the engineering of the human genomic design, the anthropos, by Sophia and Thelete (not Christos). But then Sophia departed from this rule, she acted unilaterally, dreaming a planetary experiment on her own...

And the Originator allows that to happen. for there is no compulsion on the Pleromic Aeons. They act in love AND freedom. Always think of love and freedom as a divine dyad!

But hold on. Something even more wonderful now comes into play. “It is the will of the Originator not to allow anything to happen in the Pleroma apart from a syzygy, the coupling of Aeons.” I have often cited this line from A Valentinian Exposition in the NHC (36: 28-32). Such is the cosmic principle operating through the entire Universe, the congeries of countless galaxies. And we know from the vision story, of course, that Sophia trespassed or violated that law: she acted without a consort to engage in the preparatory vision of a divine experiment now fulfilling itself on earth, right now, as I write these very words. The Originator (Supreme Godhead, Monad, Unity) allowed the exception. Yes, but also covered for it. Covered for it.

You see, that exception committed by the Aeon Sophia, and all others can be allowed because, even in being violated, the will of the Originator is never really violated. Why not? Because the Originator provides for every experiment in the Universe, unilaterally conceived or not, a mirror copy, a counterpart. Every manifestation, every experiment is intrinsically and inviolably dyadic due to the fail-safe properties of divine love. The mirroring world on M 31 is the control group for the experiment here on earth. Nothing happens to the control group. In that mirror world, Andromedans preserve the perfect memory of the origin of our experiment, as well as its perfect, optimal outcome. They are already living the outcome. The mirror world on M 31 is the habitat of the control group for our experiment, the divine fail-safe that assures it will succeed. As we remember with Sophia, we draw along with her, moment by moment, upon the memory they hold for us, looking from an infinite perspective into our minds, even into our eyes.

By remembering cosmic history in the rite of divine recall with Sophia, we have the Andromeda look. The ETs of Andromeda who inform us of our divine destiny are no one but ourselves, our cosmic doubles.

* * * * *

Throughout 2011 and into January 2012, the lunar apogee advances through the constellation of the Fishes. As it does, it moves beneath the constellation of Andromeda situated directly above the Fishes or Whales. The first act of divine memory of the Aeon Sophia is to recall the pact with humanity held in sacred memory by the Andromedan doubles of earthbound humanity. In this world we have a rough indication of the terms of the pact, a set of clues preserved in mythological form: namely, the story of Perseus and Andromeda. Andromeda means “guardian of the man, the male.” The true meaning of this myth has not until now been accessible to human imagination but it becomes so as Gaia-Sophia herself recalls it, in real time. Her recall began in late March 2011.

In January 2011 the lunar apogee reaches the limit of the constellation of the Whales and passes into the Ram. At that juncture, around 28 degrees of ecliptic longitude, the apogee aligns with M31, the Andromeda galaxy, located in the middle of the constellation of that name. From this astronomical indication I infer that by January 2012, Gaia-Sophia will have entirely recalled the terms of the pact she made with our strain of humanity prior to her plunge from the galactic core, and she will be immediately engage in fulfilling those terms. In fact, in some key aspects, she is already doing that, enacting the pact as it comes back to her in massive flashes.

Four days ago I witnessed one of those flashbacks.

In this pact sealed in the Pleroma, Sophia herself is the hero (Perseus) who saves the human race from the peril of Cetus, the ahrimanic/archontic monster. The received mythic image from Greco-Latin folk lore is contrasexually encoded. The figure of Perseus, the “destroyer,” is male in Greek myth, but this masculine persona disguises the Aeon herself, the heroine of this adventure. Curiously, this myth is inverted, as you would expect since it is held in the mirroring of the Andromedan memory of our doubles. Andromeda, “she who guards the man,” is actually the human community on M31 who preserves Sophianic memory and guards the man, that is, guards the masculine component of our species against its destructive tendencies. Perseus, a man, does not rescue the helpless woman, Andromeda. Perseus-Kali, the warrior aspect of Gaia, enacts the Andromedan protection of our species (the cosmic fail-safe of our experiment). The mysterious power of the “Medusa” released that protective spell and activate the fail-safe.

The entire myth when inverted in this way decodes into a heroine tale that Sophia dreamed for herself when she made a pact with the Anthropos. She pictured an experiment where we would face an ultimate peril and she, who put us in harm’s way in the first place, would intervene and defeat that peril with our cooperation. This is the way to decode the myth of

Andromeda as recapitulation unfolds throughout the next seven months. Every specific term of that pact can be known and enacted by each one of us in real life, in the theatre of human affairs.

Currently, the wisdom goddess in her Persean mode is destroying a massive bank of archetypal data accumulated in the collective psyche of humanity, but selectively: she is deleting the behaviorally operative archetypal imagery of male god power-structures such as the images of the Assyrian gods, Annunaki, reptilian overlords, theocrats, and other intimidating icons one often sees displayed to illustrate the Sumerian scenario of slave species. For some time now, many people have been mindlessly repeating the false script of these cosmic overlords, recounted as if it were true (Sitchin, Icke, all those adherents to the slave species disinfo scam). But this mimicry now collapses, the narrative is exhausted at the very point where it would have to be enacted, to be proven true... But it cannot be proven true. Gaia herself is actually undoing and dissolving this delusional narrative imagery in the collective psyche of humanity, and in each individual mind. As she does so, belief in that ancient disinfo scam becomes impossible to sustain. It merely crumbles. It does not have to be examined, detailed, and deconstructed. It falls away because there is no internal phylogenetic lattice to support it.

The archetypal memory or phylogenetic memory of our species is held in lattices in the Gaian memory banks. These banks are actual localities observable in shamanic trance. In ordinary or conventional terms, we call these microbial banks the anaerobic systems of life-support of the biosphere. As in all cases with the mythography I provide on this journey, the imagery and narrative, the plot, have EXACT biophysical, biogenetic, and bioatmospheric correspondences in real, verifiable natural phenomenon, as well as an illustrative or metaphoric value. (The old alchemical maxim says, TAM ETHICE QUAM PHYSICE: "moral as well as physical." That is, physically true as much as morally and metaphorically true.)

When I conversed with Gaia on Infinity Ridge in summer 2008, just before receiving the Terma of Gaia Awakening, she told me point blank that she was shutting down these anaerobic systems to insure that those who follow her ways would survive through the coming extinction. I did not understand at that time, as I do now, that she meant a selective deletion of the archetypal content relating to the master race and reptilian overlord scenarios implanted in our mind thousands of years ago. I can now see perfectly what she meant, and I can track the process of collapse or shutdown of anaerobic systems as it unfolds in real time.

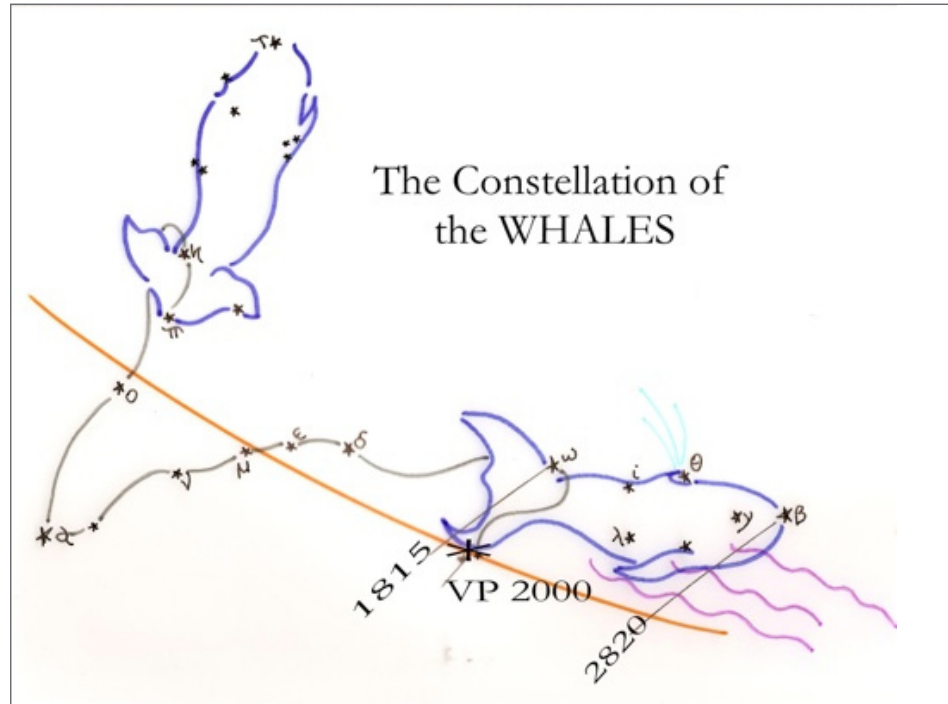
* * * * *

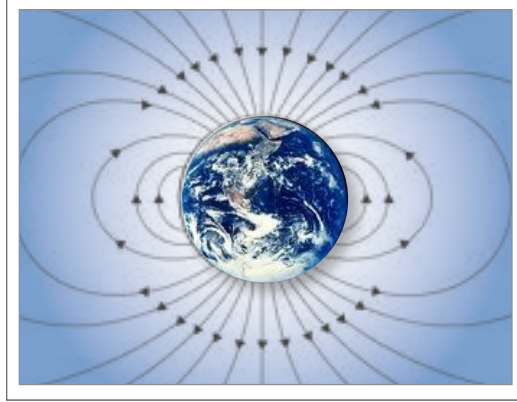
So much for these current notes. I will cut them short to get them out today and include some reports and references in a PS.

Also, I will post a version of these notes on metahistory.org with illustrations...

Safe passage and enjoy the view.

your nav





Crew Notes #3

• *Tug Lines, Doldrums, BEMA in Flux?* •

7/22/2011

Hello Crew

Here, as promised, are the crew notes for the 21st day of the current lunar shift. It also happens to be one day after the last surge: moon at apogee in 15 ECL (15 Aries), in the perihelion of jupiter. In these notes I will offer some of my impressions of late, which may be purely subjective and specific to me, or may indicate that I am picking up changes in the BEMA, the bio-electro-magnetic aura of the earth, more commonly known as the telluric electromagnetic field. I will also report on the current onboard activities on the mother ship and how she sits among the solar fleet.

Before I begin, thanks again to those of you writing in with reports and impressions. I have further confirmation from Canada, provided by a 55-year old camper who has been watching the sky since his days in the Boy Scouts, that the Pole star is oddly deplaced. I continue to notice this, although on some nights it appears to be in the usual alignment. There is thus an irregular and inconsistent anomaly. Extremely bizarre.

Also more reports from Alaska and elsewhere that the sunlight has been hardening, taking on an enamel glint. And this for quite a number of years, according to one report. Also, the emergence of a bluish hue in the sunlight is noted. Years ago in the 1970s when I had a series of astral travel adventures in which I seemed to visit the planets in the solar system, I also visited the sun. Oddly, I found that it was cool and blue inside.

I am informed lately that Viktor Schauberger, the Austrian naturalist who experimented with water, claimed that the sun was cool inside — just for what that's worth. I don't know how he determined that observation. Does anyone? In any case, Schauberger was a true Gaian scientist and keen observer of nature in the Goethean manner, and not prone to fantasy.

BENEVOLENT ARCHONS?

Obscure Gnostic Coptic texts outside the Nag Hamadi collection, the Books of Jeu, call sun “Treasury of the Light” and describe it as a kind of vast depository or lattice. It is also said to be the zone of operations of the paralemptors, “receivers”, who may be regarded as benevolent archons that defected to the service of Sophia with the conversion of the sun, Sabaoth (episode six). The paralemptors are among the most obscure and uninterpreted features of gnostic teaching. I have encountered a few and found them to be benevolent and also extraordinarily beautiful, comparable to the streamlined beauty of a Brancusi sculpture, or an elegant mantis. Their manner and presence is entirely different from the intrusive stare of the bug-eyed neonate archons. My investigations suggest that archons are able to press into our dimension physically through the pressure in certain fluids such as sweat, tears, and blood. Note that all three of these bodily fluids operate under pressure. Tears, for instance, can literally jump from your eyes when you are sobbing violently, due to the emission pressure of the tear ducts. Blood of course has a constant pressure. And sweat is pressed from the body as if it were a sponge under pressure. The paralemptors reach toward our world through the pressures associated with these fluids. They are compelled to strain toward human beings and embrace them. I have ascertained that paralemptors — literally para-leapers, or side-jumpers — are archontic entities who greet the dead and assist humans in the passage through bardo states after death. They also appear to be collectors of human experience or more precisely of unused or unfulfilled tendencies or samskaras which they lovingly scavenge and file in the Treasury of Light. Some extremely bizarre scenarios come to mind here. This is a subject that calls for close investigation in altered states.

Recently Whitley Streiber's wife has proposed that some ETs assist humans to die and guide them after death. I don't know where she got that notion but I discussed it with her and WS on a radio interview years back, and she is certainly acquainted with my gnostic angle on the paralemptors — entities that I would dissociate totally from the Grey ETs of Streiber.

Is some kind of preparation happening on the sun, involving the paralemptors, perhaps in anticipation of some massive event on earth, an event of an extinction-type? I don't know but I would not rule it out. Whatever the case, I expect the hue of the sunlight to become more distinctly blue in the near future.

Regarding one member's question about Vega as the pole star. It was 15,000 years ago due to precession and may become so again in around 12,000 years if the cycle remains constant and the earth's orientation to the cosmoc via the ecliptic plane does not change. That is a very large IF.

Clip provided by a crew member: <http://apod.nasa.gov/apod/ap110711.html>

In this clip you see at 34s the constellation of the Scorpion wheeling over and to the right, clockwise. The sightline in direction to galactic center is just above the stinger. Looking that way your are on line of sight with the Pleroma. The lunar eclipse of July 15 was in 23 Capricorn in the empty space beyond the Archer, deep in the Milky Way, as this time-lapse photo shows.

Another member reports on "Southern Kyrgyzstan 6.2 earthquake, "a strange and unusual sound was heard". More on this below...

INITIAL CONDITIONS

Before I get to my impressions, here is the current picture with the mothership. From June 24 (moon at apogee: 9-10 ECL, 9-10 Aries) until July 21, yesterday (moon at apogee 15 ECL), the mothership is idling in a clam spot in the galactic stream. Imagine the third spiral arm as a huge river of stars, a celestial Amazon. It curves around to the right. The sun and earth and solar fleet are cruising up the arm, up river and around the bend. It is a very long cruise. Right now the mothership appears to be somewhat becalmed, but not stalled out. As I noted, between June 24 and July 21 she is checking her systems, revving her engines, getting ready to undertake self-propulsion. How will she actually becoming self-propelling. Slowly, and with great care. Great caution.

Jupiter acting like a tug plays a huge role in how the mothership gets into position, how she "comes about" into the course correction. The captain wants to make this turn to perfection because it sets the initial conditions that will permit her to navigate on her own in the cosmic Amazon. The correction taking 10 seconds of her time will take three years of human time.

Of all the things you are now learning, most of it is elementary astronomy. I don't think you will find it too daunting. There is one point of paramount importance I would have you take on board (to use a nautical metaphor). One element of Sophia's process of correction that I would have you register with indelible certainty in your minds and imaginations. Consider this proposition, a single line, and inscribe it deeply into your memory, just as it is stated:

THE CORRECTION OF SOPHIA TAKES PLACE IN
THE APSIDES OF JUPITER.

This is an astronomical fact expressing a mythological event. It is the basis of everything to follow by way of Gaian navigation. I ask you to repeat this proposition like a mantra, and tell it to people now and then. Play with it, contemplate it, keep it alive in your mind and accessible at all times.

Here in nautical metaphor is what it means: between jupiter and the earth stretch two massive tethers, inconceivably thick and round like the tethers you see that moor an ocean liner to a dock. They are made of braided rope. These dual tethers are the apsidal lines of jupiter, stretching from perihelion (point of jupiter's orbit closest to the sun: 15 ECL or 15 Aries) and the aphelion (point of jupiter's orbit most distant from the sun: 185 ECL or 15 Libra). Around June 24 the two tethers were laid between jupiter and the mothership and secured at both ends, but not pulled taut. They are slack, floating in the water between the two vessels. While this situation prevails, the mothership is free to drift around loosely on its mooring — the midstream mooring provided by the tug. As Gaia revs her engines and checks on board systems, the tethers keep her safely within a certain range of motion, not carried away in the celestial river but not self-propelled on it, either. She is drifting under control and setting up her correction.

From July 21 (moon at apogee in 15-16 ECL) to August 18 (moon in apogee at 20 ECL), this situation persists but with slight changes that can be detected in geophysical, atmospheric, and astrological conditions. In this second interval, the tethers are drawn tight, but the mothership still does not go into full self-propulsion. Rather, she is carefully held in place by the tethers, moored to jupiter. She swings around more deliberately, to port and starboard, but remains held steady by the tautness of the lines. Imagine what would happen if the captain hit the throttle or whatever it is called on an ocean liner: the mothership would "come about" in a massive arc conducted by the tethers extending from the tugboat, jupiter. That is what she will do, eventually. Right now, the tugboat is merely stabilizing the mothership as she lolls in a calm spot somewhere midstream in the celestial river.

In future notes I can provide an overview of the solar system to show in detail and with specific timing how and when the mothership will power up and pull herself about on the tethers of tugboat jupiter. "The correction of Sophia takes places in the apsides of jupiter."

Right now the tethers are tense but the engines of the mothership are idling. You may note from various sites and YouTubers who report on earthquake activity (Dutchsinse, for instance) that earthquakes are happening all over the world in vast distribution. Imagine the tremor of the mothership as she idles, checking the power of her engines: volcanic-tectonic activity. If you have even been on an ocean liner you will have an unforgettable memory of the tremor of the engines reaching your feet from below deck. Note that despite all the widespread and quite potent volcanic activity, ranging to 6.5 and more, there are no reports of massive damage, earthslides, cities falling — not that I have heard. May I allow myself to suggest that Sophia is revving the engines as hard as she can without incurring material damage to the terrestrial ark?

Now, as to the mothership being in lull or loll. I strongly sense this possibility. Since I returned to Spain on June 24, it has been unusually calm here. Uncannily calm. And the sky has been an impeccable dome of blue with no airplanes, no commercial traffic!!! It is impossible for there to be no commercial traffic at this time of year over where I live, but I have gone days on end without seeing it. Just recently, it appears to have recommenced but there was two weeks with no planes at all, day or night.

BECALMED?.

Apart from the odd anomaly concerning air traffic, I have felt a potent and uncanny calm in the air. It is really as if the mothership is becalmed or in the doldrums. She is drifting listlessly but not adrift due to the security of the jupiter tethers, the apsidal lines. With the lunar apsides (her steerage) coordinated to the apsides of jupiter, Sophia has left her steerage on remote under jupiterian coordinates, one might say. Now she relies on that massive planet to hold her in place as she prepares to engage her props and come about. As noted above, at that moment the mothership will swing around on those tethers and be launched on her corrected course. As this happens, the tethers are gradually retracted so that when the critical moment arrives, jupiter is close to the earth, in conjunction, near its own apsidal lines. I can map this graphically and give you the time parameters.

Meanwhile, I find that some extremely strange energies are welling through the ground and atmosphere. The last surge, for instance, was deep and uncanny and seemed to put me and another witness into a kind of spell, almost a torpor, the sense of being "in the doldrums."

Unmoored, drifting. I have found in the past that the apogee surge can knock me out. I have passed out several times and just slept through it. This time, it seems for myself and the other witness that we were thrown into a dreamy torpor. One impression was distinct: I just could not concentrate on anything. Neither could she. My first attention, linear-logical thinking, was stifled, weakened to a remarkable degree. We also both felt a little queasy, not sick but the way you feel when you are just on the verge of getting seasick. Unable to do much except loll around.

Kundrie, the crew member (see attached), wondered if this effect might become widespread and could be influencing how people function. She mused, for instance, that people working in an office would be afflicted by a drop of the first attention, unable to perform routine linear-logical tasks. Exactly as if they were caught in the stupor of the dog days, the doldrums. I think it is conceivable that such massive reactions of BEMA modifications can occur. We might hear on the news that groups of people in certain work situations or performing sports etc are unable to function. I can almost feel something like this coming.

There is also a feeling that something extremely odd is happening in the BEMA, physically, as if the animal magnetism of the planet were undergoing a radical change and now, in a new way, powerfully and deeply engaging human feelings. I feel half dissociated, but then I notice that my emotions and senses are being rewired in some manner, or reconfigured as the BEMA itself undergoes flux. I would say deep and extreme flux. As birds and insects can feel the current changes in the electromagnetic field, the shift of magnetic poles, etc, and drop from the sky, so can humans perhaps drop into exhaustion or mental dysfunction. With this recent apogee surge, I am feeling this possibility intensely. The main characteristics are a listless feeling and inability to concentrate. I have also heard a couple of people remark on these effects, without knowing a thing about Gaian navigation, surges, etc.

How about your comments and impressions?

I want to report as well on hearing a strange low consistent rumble from the earth for well over an hour last evening as the apogee surge was approaching my locale. I had another witness to the even, Kundrie. We could not ascertain where the sound was coming from, except that it vaguely seemed to originate in the earth, and to swing around from north to northeast. K also observed earth lights flashing toward the north — not lightning. Other sounds such as cars and distant music were easily distinguishable from this noise which

remained soft and low and consistent. We remarked that you would perhaps not hear it if you were not prepared to hear it. But once we heard it, it persisted constantly until we had to go to sleep.

Lately, I have been sleeping differently as well. Feeling elated when I arise, after having a deep smooth sleep in which I participate in long conversations with a familiar group of people, and we are instructed in some way — but it is not the typical classroom dream scenario. I wake from these dreams feeling elated, as if I have been informed about something that pleases me greatly. I cannot yet identify the people who are with me, but they are familiar and there is a large group of them.

What do you make of that, crew?

We are now currently in the hinge of the lunar cycle under Tantra Mother, Vajrayogini. Her instruction this time around is exceptionally soft and gentle — dakinis can be gentle!! She teaches about love and bondin and the transformation of the five toxic emotions into elixirs. I sense that her instruction is secondary to what is coming from Sophia herself. During the hinge, dakinis often provide solutions and brilliant, liberating insights, or practices, relative to their expertise.

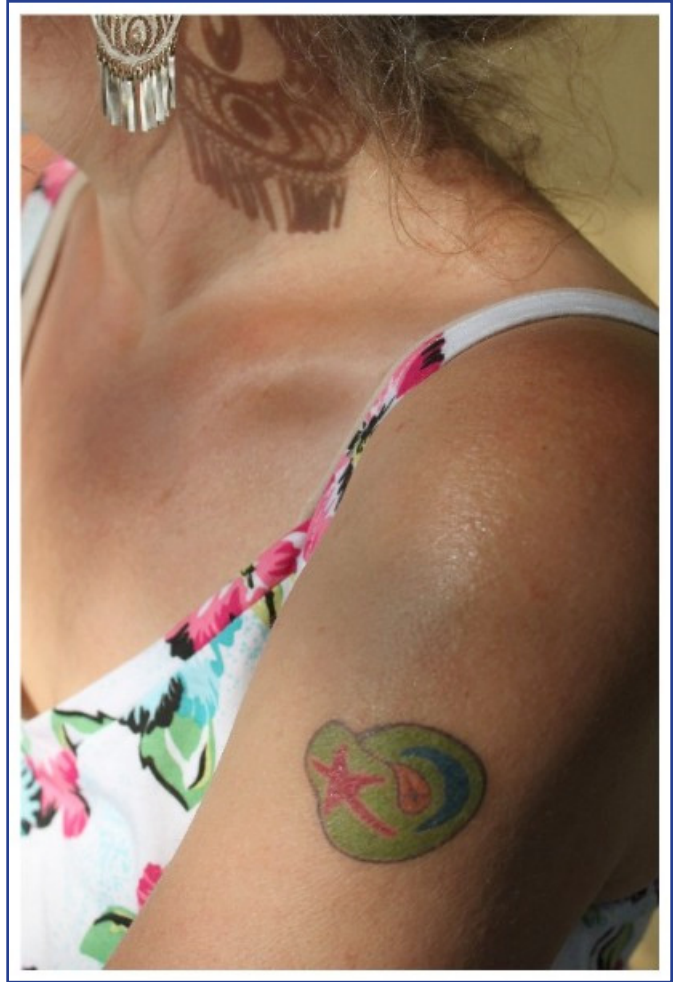
My overall impression right now is that Gaia is taking extreme measures to insure the safe passage of all aboard before she engages her engines. That is why correction may appear to be a little slow in taking off... Fortunately, she finds herself in a calm spot in the galactic stream. She is pitching down, her bow dipping southward from time to time — perhaps explaining the displacement of the polestar. I can tell when she locks on Canopus and that also will be a key moment in course correction. Enjoy the calm while it lasts.

Next notes due tuesday August 3, third day of the coming shift under Bhairavi. Also, there is an perigee surge on that day: in 21 Virgo or 171 ELC, conjunct Denebola in the tail of the Lion. Interesting, as Bhairavi is a lion-figure comparable to the Egyptian Sekmet and Simhamukhi of Tantric Buddhism. I have yet to brief you on the nature of the perigee surges. You may need to be tied on board for that...

with gratitude and affection to all,

I wish you safe passage,

your nav



.....

PS to Crew Notes #3:

• construction of the mothership, nautical metaphor •

7/22/11

Terra Navis is a steam-sail ocean liner with a glass bottom, rudder front-rigged.

Steam engines: volcanic-tectonic system, steam venting, including undersea volcanoes and vents.

Sails, comprised of canvas cloth and rigging:

canvas: clouds, air,

rigging: electromagnetic field permeating the atmosphere.

Front-rigged rudder: earth-moon barycenter, apsidal lines of the moon. Gaian steerage is custom designed for tacking upstream along the spiral arm. Starboard is right, looking inward toward galactic center. Port is left, outward on the spiral arm.

Sophia initiates correction when the lunar apsides, which advance erratically along the zodiac every 8.8 years, are aligned to the apsides of jupiter which remain fairly steady in this epoch across 15 - 185 ECL: graphically in WHALES - VIRGIN. At the onset of correction, jupiter passed through its own perihelion (April 6 - 10, 2011, with the mothership directly opposite) and the mothership "comes about" into the new course when she crosses the perihelion of jupiter on October 8 - 10.

Closest alignment of lunar apogee to jupiter perihelion: June 24 - July 21 - August 18, 2011. At this time, however, the mothership is idling, not yet under full throttle with props engaged.

THE CORRECTION OF SOPHIA TAKES PLACE IN
THE APSIDES OF JUPITER.

APP-suh-DEEZ.

My mission as navigator is to winch the power of human imagination into the rigging of Sophia's Dreaming so that when the cosmic winds fill her sails, those who are so engaged come about with her on the course correction of her celestial journey: Wisdom's Dare.

JLL

.....

Gaian Navigation Experiment in Forum

7/27/2011

Hello Crew

A day or so ago I mistakenly sent out a message that had already been sent. Some of you responded. You can disregard it. I am in the process of converting the routines for crew notes to a more efficient, open system. One crew member has set up a yahoo forum which I will use from here on out... My apologies for inconvenience so far or appearing to be a control-freak, which is not my intention. I just don't know how to set up such an operation efficiently. Fortunately, the solution has been provided in the Yahoo forum where all your observations will be posted from here on. The forum is arranged to observe the categories of observations I initially proposed. As nav, I have the option to respond in the forum or through mailings as I've done so far.

Keep your communications on PT and the Gaian navigation experiment on the forum, so everyone can see and discuss them, and address specific questions to me at this address. Or for other matters write me at jll@metahistory.org. Eventually, we may set up a "questions for the nav" section on the forum. Also, I intend soon to automate the sign-up list. Thanks enormously to crew member Heidi Smith for taking the initiative on this change of routine. Now I can devote myself more diligently to crew notes, charting procedures, and other writings on metahistory.org. To sign up:

Invitation To The Terra Navis Yahoo Group

Hello friends,

We now have a group site on Yahoo Groups where we can communicate together about our post-correction observations, the Captain's Log and other related subjects. We also have files, calendars and photo albums etc. to aid us in our work together.

Getting Started:

1. Get a yahoo.com account if you don't already have one. <http://www.yahoo.com/>
2. Sign up on line at <http://groups.yahoo.com/group/terranavis>
3. After you sign up, you'll receive a welcome letter and Getting Started Guide via email.

NOTE: Strict rules of polite discourse will be observed in this forum at all times. You may freely characterize ideas and behavior as you wish, but not other people. We invite you to create what you wish this group to be through your intelligent, loving contributions and presence.

With a warm welcome — Moderators: Heidi and John.

Wisdom's Dare on Reality Sandwich

7/28/2011

http://www.realitysandwich.com/wisdoms_dare_future_divine_experiment

Full 2 hour redice interview on correction

7/28/2011

<http://www.youtube.com/watch?v=0UG2HhIxuHs>

American Freedom Radio 2-hour interview with Frater X

7/28/2011

<http://www.americanfreedomradio.com/archive/Radio-Free-Humanity-32k-072311.mp3>

It might serve our little adventure to have a page on the forum listing my interviews with links. So that from that single page a person can go directly to any recent interview. These talks are getting quite a lot of circulation now, from many angles. And crew members are showing up as a result. If someone would like to compile such a page contact moderator Heidi Smith on Terra Navis.

PT 10 talk with Thomas Malone

7/31/2011

<http://www.blogtalkradio.com/grok-the-talk/2011/07/30/planetary-tantra-10>



Crew Notes #4

• *Divine alchemy, perigee surge Aug 2,* *Comet Elenin* •

8/1/2011

Greetings Crew,

As promised I will send out crew notes on days 3, 8, 13 of the lunar cycle, and during the hinge, days 20-21-22, following the fibonacci numbers encoded into the dakini cycles. Since the series begins, 1, 2, 3, I will send out the first notes on one of these days and no later than day 3.

This time I am kicking off on day 1 because there is a massive perigee surge on day 2 and I want to alert you to what's coming.

First, however, here is a short notice about protocols: With the forum TERRA NAVIS on Yahoo now up and running, you all have the option to use it but no one is obligated — if forums are not to your liking. All crew members will still receive notes directly from the navigator. Think of the forum as the crew “mess”, the dining hall where you can meet and talk, discuss observations, and consider the navigator’s notes. It can be a lively place but not to be confused with the bridge.

I can and should be contacted here on navigator@metahistory.org and not through the forum. When the forum was launched, I suggested that all crew post their observations in five categories on the forum and I would look it over and pull out observations and reports to include in the crew notes. Please take note of my revision of this routine. Due to limitations of time, I will not be trawling the forum to find your observations.

Consequently, I need you all to send all observations directly to me as originally proposed, and also post them on the forum, if you so wish. If you have submitted any observations since joining the forum, please send them to me directly so that I can catch up, if necessary. Thank you for observing this protocol. Those of you who have recently signed on and may wish to receive previous Crew Notes, just let me know. I think you can also get them at the forum TERRA NAVIS.

* * * * *

So much for the details of onboard communication. In these notes I want to cover the matter of the perigee surges, to alert you to what's coming up immediately: Tuesday 2 August 21 h GMT. This is a perigee surge in 21 Virgo (ECL 171): graphically in the zodiac, this locale is conjunct the star Denebola, beta Leonis, in the tail of the LION.

So far, as you know, I have concentrated on apogee surges. These moments once a month when the moon transits the point on its elliptical orbit most removed from the earth are associated with surges of telluric energy from the Shakti Cluster. That is one level or aspect of their significance. Another aspect, according to the nautical metaphor, is the tacking of the mothership as explained in detail in Captain's Log 2:

<http://www.metahistory.org/GAIA%20SOPHIA/mythos/CaptainsLog2.php>

There is describe how the helm-and-rudder of the mothership works. Briefly, at the perigee surge the mother ship veers hard into a turn or adjustment of course, and at apogee she holds to the course taken. Such is the nautical metaphor of steerage.

NEURONAL THUNDERBOLTS

Then there is a third aspect to the surges: they represent key moments of divine memory and divine alchemy, apogee and perigee, respectively. By tracking the shift of the apogee through the background constellation (the FISHES or WHALES for the duration of 2011), I can decode the process of divine memory by which Sophia recapitulates her own story, especially the beginning of her adventure when he dreamed up an experiment for the Anthropos and involved herself in it, all on her own, without involving any other Pleromic Aeon.

So, apogee advance in the FISHES, recapitulation of the wisdom goddess. M 31 the Andromeda galaxy is intimately involved in this first stage of recapitulation, as I have explained in a couple of recent interviews.

As for the perigee surges, I have spoken less about them but now is the time to look at them with equal and complementary attention. By contrast to the apogee indicating divine memory, the perigee indicates divine alchemy. The shift of the perigee against the background constellations (starting with the VIRGIN) encodes the bolts or jolts of hits by which Sophia brings her power of correction to the human species, right into our minds and bodies. She effectuates correction by a sequence of specific massive jolts to the psychosomatic and neuronal structures of human reality. She breaks right in and reconfigures our minds, impacting us physically in ways that you can observe and verify by direct experience. She literally uses her talent as V.V., “flirtatious thunderbolt,” to strike us individually and as a species with neuronal thunder and lightning.

Since the onset of correction of March 16 there have been five massive perigee jolts:

March 19: 30 Virgo ECL 180 at the forehead of the VIRGIN, right between the eyes

April 17: 14 Libra (194) in the diaphragm of the VIRGIN with saturn

May 15: 27 Libra ECL 207 in the lower body of the VIRGIN conjunct Spica, the star marking the sheaf of wheat (entheogenic mysteries)

June 12: 1 Scorpio ECL 211 at the knees of the VIRGIN, lunar eclipse

July 7: 6 Libra ECL 186 in the thymus of the VIRGIN, 18-petalled chakra, super-immunity

NOTE: In indicating these locations I use three referents: the astrological sign by degree, the degree on the ecliptic scale ECL marked from to 360 beginning at the spring equinox (1 Aries in the tropical or astrological zodiac), and the actual, visible location in the real-sky constellations. You may observe the astrological sign positions if that format is familiar to you and helps you learn the system, but I advise you to shy away from making astrological interpretations based on that system of reference.

Tracing the sequence of perigee surges so far, do you notice something unusual. With the apogee we are used to seeing it advance on the ecliptic, sliding through the FISHES, in direct motion following the natural order of the zodiac. The lunar apogee advances more or less steadily, though there are nuances in its motion worth noting. Remember, this is the part of the steering control yoke used to keep the mothership steady in a turn once the turn has been set by the other part of the yoke, the short arm or perigee.

With the perigee we see an advance by some considerable leaps through the VIRGIN, ahead, in the natural order of the zodiac — and then what? On July 7, the perigee which had advanced to ECL 211 jerks back by 25 degrees to 186. The shift of the perigee is highly erratic, jumping ahead by fits and starts, then suddenly reverting or reversing its movement. This behavior gives you some idea of how the helm-and-rudder device geared to the short arm judders as the mother ship negotiates a sharp turn into strong currents or across currents. Like the judder of a steering wheel of an outboard turning hard. We see this judder action in film of Formula One race cars taken from a camera on the driver's helmet.

The periodic surges of the lunar perigee signal moments when Sophia direct a thunderbolt of her attention upon us, the human species, with the intention of producing a spontaneous and radical mutation. She is literally impacting our neuronal and psychosomatic circuits with massive doses of her Dreaming power. I call this process the transmutational actions of divine alchemy, complementary to the recapitulation of the wisdom goddess, her process of divine memory, tracked by the apogee.

CHIRAL LOCK

Scanning the perigee moments so far, you might relate to some indications, although I have provided so far just a slight dose of directive syntax. Your observations of changes in personal reality or in the behavioral drama of world events, may match certain moments of this sequence. Consider these suggestions:

March 19, the very moment of the onset of correction, Sophia delivered a jolt that broke the “chiral lock” used by the archons to hold us in their spell. As explained in PT talk 10 —

<http://www.blogtalkradio.com/grok-the-talk/2011/07/30/planetary-tantra-10>

the chiral lock is an artificial bind that locks the first and second attention on a seam located right between your eyes. In a natural state, the first attention (left eye: Manas) and the second attention (right eye: Buddhi) carry peripheral fields like huge curving plate glass lenses and these two fields interact, they float freely over each other like tectonic plates. But when we slip under the archontic spell, mainly by everything that decreases our attention — using tv screen flicker, sound-bytes, twitter, jackhammer editing on MTV clips and advertizing, stop-motion photography, and other such technologies of entrainment — these two lenses of peripheral vision get locked on a seam. Consequently, reason and imagination cannot work together. We have logic and linear thinking on one side and imaginative processes such as fantasy and dreaming or creative

reverie on the other. Both sides lose out because we are designed for the these two master faculties, reason and imagination, to work together.

Now what have been the symptoms of Sophia breaking the archontic spell by shattering or dissolving the chiral lock? Some of you have reported a dual effect: first, not being able to concentrate very well on linear tasks for the long term, and second, persisting in a vague, dreamy, undetermined state. You may find that you can concentrate on small practical tasks, but nothing too demanding for the first attention, which is linear-logical ideation. This happens because you are just getting back the use of that faculty in its natural state, freed from the unnatural freeze induced by archontic entrainment. Like an arm that was paralyzed, it is coming back to use but you can only use it lightly, occasionally, not for any long strenuous task. Hence the weakness of the first attention. Some of you have reported this effect over the past few months.

As for the second attention, this has also been freed by the jolt of March 19, right between the eyes. The result is, your natural dreaming power is released, it has been liberated but at first reveals itself as a vague, undetermined state of reverie. Do you often feel yourself wanting to just float, daydream? These is a pleasant and attractive pull in this effect, isn't there? Sophia has freed the second attention from the freeze of the chiral lock.

As correction proceeds, you will find that you have powers of imagination you did not previously suspect. And when you get a glimpse of the story, when you feel the dreaming of the Aeon reach you, you may have a sudden, vivid realization of how the power works in you, going beyond anything you have previously known or even suspected.

Of course, the release of the second attention is intended by the wisdom goddess for us to follow her Dreaming and participate interactively in correction as she achieves it. At the same time, we use the renewed power of sober reason and observation to verify empirically what happens within and around us as correction proceeds. How wonderful is that?

TAIL OF THE TIGER

Now, as to the upcoming perigee surge, August 2 at 21 h GMT. This occurs in the third day of the new shift as the sunset crescent appears in the LION. Correlation to the mahavidya Bhairavi in the Shakti Cluster. Her equivalent is Simhamukha, a powerful dakini said to have instructed Padma Sambhava in the ultimate secrets of Tantra, also to the lion-headed goddess, Sekmet. Read about Simhamukha, the Lion-Headed Female Buddha, in Buddhist Goddesses of India.

Note the action here: as this lion-dakini comes on shift, with the sunset crescent appearing in the heart of the LION (around 28 Leo or ECL 148) there is a massive surge with the lunar perigee in the tail of the LION conjunct the star Denebola. At the earliest sighting, the crescent would be near Regulus, the heart-star of that constellation. At a later moment, it would be in the body, approaching the tail. Get the picture?

The remarkable thing about this event is that the lunar perigee representing a jolt of dreaming attention is delivered at a locale well back from where the perigee stood at the onset of correction. On March 19 the hit came right between the eyes with consequences and observable effects as just described. After that moment, VV proceeds to deliver a series of jolts running down the full length of the VIRGIN, but then reverses the process. On July 7 she hits the immunity point: as if she had to go back to make another strike in an area she had scanned, to make sure she is covering all the bases.

I would propose that she reverses direction like this in order to provide the conditions needed for us to handle jolts she has previously delivered. For instance, we need high immunity to go against the archontic system with the powers released by the initial jolt, releasing the chiral lock.

Consistent with this explanation, what would she have in mind by reversing the direction of her intentional mutative jolts all the way back to the LION, positionally back from where correction kicked off on March 19? This is the most extreme point in the direction of the zodiac that any surge will occur, back in the sequence from the VIRGIN. When the initial conditions for corrections are completed in March 2014, the lunar perigee will have advanced to the tail of the GOATFISH. Interesting. from “the tail of the tiger” to the tail of the Goatfish! That is the full scope of the lunar perigee during correction.

The August 2 surge is a massive hit on the sacral plexus of the body delivered dorsally through the lower back, the seat of kundalini. It delivers a surge of sexual-erotic power suitable to the full-bore ferocity of warrior prowess. In psychological and emotional terms, it would manifest in a massive dose of SACRED ANGER.

I won't elaborate more right now on the upcoming surge, leaving it to you to undergo it with me and offer your observations as things unfold in the coming week. Bhairavi, I might warn you, means “the terrible one.” All the mahavidyas are expression of Kali, but this one especially of her warrior aspect, Durge, “invincible.” Miranda Shaw calls Simhamukha the “goddess of transcendent anger.” David Frawley equates her to the sacral plexus: that is, above the base chakra (muladhara) and below the solar plexus (manipura).

COMET CRAZE

In closing, I ought to mention something that has been nagging at me for a couple of months. You have all probably heard some panic and fear-mongering about Comet Elenin, including claims that is an alien mother ship coming either to save or destroy us, the usual ravings typical of popular delusion (more on that term in the near future). Well, I would say up front that I am not even sure that Comet Elenin exists. It may be a hoax and a NASA fabrication, of which there are many. It has been identified as Wormwood from the Book of Revelation, Nibiru, Planet X, etc. It is claimed to be due to make a close pass by the earth in the fall, provoking speculations of terror raining from the sky.

I have consulted YouTube clips and other internet sources to track the path of Comet Elenin. I do not trust any of these sources which might be duped, tricked into taking false data for a real event. Curiously, though, it appears that Comet Elenin was curving around on a course into the solar system on March 19, exactly in the place where the lunar perigee stood: right between the eyes of the VIRGIN, some ten degrees from the tail-star in the LION. In other words, this comet or phantom entity appeared to veer into its disaster track toward the earth precisely where the lunar perigee stood at the onset of correction. Since then, Comet Elenin has moved into the body of the LION. It is making a course from the head of the VIRGIN around into the LION, but what is happening right now is that Sophia pulled the lunar perigee back from its advanced position at the knees of the VIRGIN to the exact locale where this presumed menace is said to be approaching the earth.

What do you make of that?

Oddly, those who are tracking Comet Elenin are unwittingly following the location of those critical massive perigee surges in the LION and VIRGIN, without having the slightest idea that this is so. Whatever else it is doing, and whether or not it is really there, the “data” provided on this comet direct human attention to that region of the starry code-banks which reflect and record what Sophia is currently doing to transmute the human species.

Your comments and observations on Comet Elenin are welcome.

COMING UP

The upcoming sequence of perigee surges looks like this:

- August 2:** 23 Virgo ECL 173 at the tail of the LION
- August 30:** 6 Libra ECL 186 repeating the direct jolt on the immune system of July 7. Another dose of super-immunity! Wow.
- September 28:** 12 Libra ECL 192, closely repeating the jolt of April 17 with saturn nearby. Diaphragm of the VIRGIN.
- October 26:** 28 Libra ECL 208, repeats the jolt of May 15 near Spica
- November 23:** 14 Scorpio ECL 224 in the SCALES.... shifting into the next constellation in the natural order, going around counterclockwise through the zodiac as I map it with the Rimsite format.

In coming notes I will map the solar system from above showing how the tugboat (jupiter) is swinging the mother ship (earth) into position to “come about” into the first phase of correction, with the lightship (saturn) assisting the orientation. I will show how you can actually picture the process of the mothership being swung around on the massive tether-lines of jupiter (aspides) so that she is in precisely the right position at the moment she engages her engines full throttle.

THE CORRECTION OF SOPHIA TAKES PLACE IN THE APSIDES OF JUPITER.

Sophia is being infinitely careful to set the initial conditions for correction, as everything follows from those conditions. Right now, the mothership is still idling or occasionally revving her engines without engaging her props, getting her sails in order, squaring up the rigging, etc, and engaged in the tasks required to get all onboard systems of navigation and communication up and running. The wisdom goddess makes her correction with infinite and meticulous care, intending to insure “safe passage” for crew and cargo. She stands in a kind of calm spot in the galactic current, with occasional ripples and soft swells.

I have noticed a persistent uncanny calm in the atmosphere here in Spain, with crystal clear skies and almost no air traffic, which is inexplicable. Observations, anyone?

That’s it for now.

warm regards to all,

your nav

.....

PS to Crew Notes #4:

• Crop Circles and PT •

8/1/11

Hi Crew

I couple of things happened this morning as I was winding up the crew notes , around 8 AM here in Andalucia. When it came to writing the passage on Bhairavi, “the Terrible,” and sacred anger, a sudden storm blew over the valley, the electricity went out, and it began to rain. This is unheard of in southern Spain in August, the hottest and driest time of the year. I associate rainy, stormy, turbulent weather with the Shakti Cluster— hence I coined the term, dakini weather. I got quite a vivid dose of it this morning. It was still sprinkling when I went to town at 11 and the local people were standing in astonishment in their doorways.

Upon posting the notes, I checked my jll@ mail on the other computer and got a notice from a crop circle mailing list, announcing a formation that appeared in Wiltshire on July 29, at the close of the Vajrayogini shift.

http://www.youtube.com/watch?v=raIfxW5we_U&feature=feedf

Like some among you (I suspect), I have been watching crop circles for many years. With some exasperation, I must say, as I can’t finally make any sense of them. Where the genuine ones are concerned, some kind of complex and intentional communication is underway, no doubt. But from what source? For what purpose? I have not found a satisfactory answer to these two questions or numerous others that arise concerning this enigma. Considering crop circles of a supernatural expression of mother earth reaching us in symbolic language is an appealing option. They are after all communications written in the earth. But I have not been able to put together a convincing case for that viewpoint.

After I discovered the Terma of Gaia Awakening in August 2008, I considered the possibility of “confirming” that the phenomenon was indicative of two-way Gaian interactivity by linking it to the dynamics, geometry, and astronomy of the Shakti Cluster. So far as I know, no exact crop circle design of the Shakti Cluster has appeared. However, I catalogued a number of stunning formations (presumably genuine, although I know that fakes do occur) that contained elements of the 8 / 16 or 5 / 5 / 8 or 6 / 2 X 6 modalities of the SC and even reflected some geometric and astronomical properties, especially lunar properties (which are, anyway, extremely frequent in crop circle formations).

As a matter of fact, this circle appeared in 8/8/08, the exact moment when I discovered the Shakti Cluster.

<http://goddessontheloose.com/?p=322>

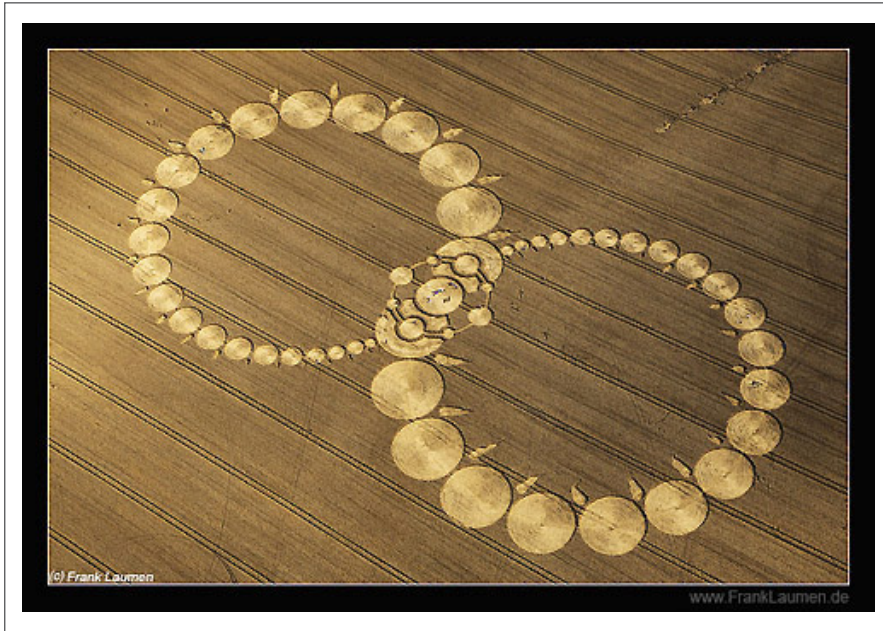
The core structure of 8 circles, large and small, bonded on a ring, is superimposed over three circles, two larger and one central, smaller. None of which directly suggests $2 \times 8 = 16$ or other modalities of the SC, but the overall structure with its two lunar frequency circles suggests something like that. Over time I collected about 10 crop circle formations from 2008 onward that represented, either in a vivid manner or tangentially, by inference, properties of the Shakti Cluster. However, I was not able to make a convincing case for a connection in my mind. I felt I was forcing the evidence. Then I had a problem with my Mac and lost the file of links to the formations I had collected.

Well, so much for that. Now here comes the crop circle in Wiltshire, four days ago. It pops up on my screen minutes after I have completed writing about the perigee surge of August 2, kundalini (the serpent power), the sacral plexus, etc. The 29 units would correspond to the length of a lunar cycle. the S formation is obviously serpentine. And the two counterbalanced orbs at the center might suggest the apogee and perigee points... ?

The commentary below this image interprets it in terms of kundalini. (Which is not a "christic energy," by the way. Whatever a christic energy is.) Anyway, the timing and imagery are extremely relevant even if one cannot make a larger case for the connections between PT and crop circle phenomena.

I have been getting a lot of synchronicity lately, things and message showing up immediately when I talk about something, wonder, or even think of a certain topic or option. I would take increased synchronicity as a sign of a good, healthy, natural, fluid interaction of the two plates of peripheral vision corresponding to the first and second attentions.

your nav



.....

Epiphany of the White Wolves: Sacred Anger

8/1/2011

<http://www.youtube.com/watch?v=C0UnvUacwSQ>

Another example of synchronicity linked to current material in the crew notes.

nav.



Crew Notes #5

• *Psychic Eruptions, Sacred Anger, Avataric Experiment, and More* •

8/8/2011

Greetings Crew,

We are still in a relatively quiet period but I expect things to pick up considerably toward the end of this month. Several of you have written me noting an uncanny or eerie calm in the weather, the look of the skies (this particularly), the overall mood of nature. Beneath this calm are deep rumblings in the collective psyche as the waves of the future prepare to rise and break surface.

PSYCHIC ERUPTIONS

Apogee surges (most recent: July 21) manifest in eruptions of the collective psyche, including spontaneous memories of mythological themes and events, making it possible for many people to partake in the recapitulation of the wisdom goddess. In other words, as she remembers, humanity at large is jolted by psychic eruptions of archetypal and transpersonal material. You will experience these surges through dreams, intuitions, and other eruptions of your psyche, for instance:

“Last night I dreamt about a disaster involving barium. I am unfamiliar with barium so I looked it up and was surprised to learn it is used in so many exotic technologies like magnetic levitation, flux pinning, the Meissner effect, superfluidity, Bose-Einstein condensation, gas in a box, tachyon condensation, chemtrails, scalar weaponry and more. With all those applications I guess it’s not surprising for barium to be part of the collective unconscious and for people to start dreaming about it.” (Submitted by a crew member.)

But without the proper syntax it will be next to impossible to realize the significance of these eruptions and integrate the contents. My task is to provide that syntax carefully positioned within the narrative frame of the Sophianic myth. I would suggest that the above dream is a clue/cue to the topic of free energy, the prevailing riddle of our evolution and likely to be the breakthrough for human society into the opportunities of Sophia's correction.

In the navigational metaphor, apogee surges represent the moments when the mothership heels deeply into a curve, holding steady to a direction taken. You can imagine a high wave of white water peeling elegantly along the bow as this happens.

LISTENING TO THE EARTH

One clue to the sub-surface turbulence appears to be in sound, sometime associated with the sea:

"Last night another storm from about 12:30 to 2 am... characterized by loud rolling thunder and lightning. The thunder seemed to mesh with the shimmering brass symbol feeling of the day before, seeming augment the rolls of thunder which also seemed to 'roll' for longer periods than I had remember experiencing in close dreamtime state."

"Wanted to report something very strange with the ocean in the wee hours this morning. I live on the Palos Verdes Peninsula in California about one mile from the ocean cliffs (rocks, no beach). Last night I awakened at 3:05 am and could actually hear the ocean, which I have not heard at all since moving here 5 months ago (from a location much closer to it). My window was only cracked open slightly so this was especially unusual. I then got up and went outdoors and it was very, very loud. It was so ferocious that I woke my husband and had him come out to hear it. I felt almost compelled to drive down there and watch it, but did not. Within minutes when I returned to bed, it had stopped. BTW, it was a calm and starry night — no weather"

"...a friend of mine, her husband & neighbor heard an unexplained and undefined "buzzing" (as in the wings of many insects), & "whooshing" sound coming from their woods last week? If lasted a half hour & stopped as inexplicably as it began. These people are beekeepers and say it was like the sound of many, many insects."

Listening to the earth is an elementary practice of PT.

ANGER AND OFFENCE

Other report some dramatic kundalini experience associated with the recent surge:

“I could feel the usual activation of the kundalini and as it traveled up through the chakras, something different occurred. I felt a lower tone or frequency center at the heart chakra and grow with regularity, it felt like something “materializing” in the area above and behind my heart. As this was happening I think my personal frequency, or wavelength, increased because I began to perspire all over though I was in an air conditioned room and the temperature was a steady 72 Fahrenheit. I also felt a little woozy, but I knew I was in no danger.”

There seems to be a lot of anger flashing in the air. Like sheet lightning over the calm spot in the galactic stream where the mothership is currently moored on a long hawser from Jupiter.

Observe and respect your anger but don't project it carelessly. Watch your manners. Bhairavi will wreck your ego in the blink of an eye. You won't see it coming. She may arrive with the sound of clashing symbols:

“The morning was rather cloudy with ‘mottled’ looking clouds... I associate these kind of clouds with electromagnetic frequencies... don't have a good explanation why. Otherwise clear for rest of the day, but with a surreal aspect to the clarity.

Around sunset a thunderstorm with heavy rain for about an hour. Sun looked like it was setting more to the right than when I observed it a couple weeks ago. It did not have as hard white of a quality. The sunset had a light lemon yellow tint to it, unlike the warm golds reds pinks I remember from past years.

Lately (couple weeks ago) I was noticing some pinkish color in sky area from the ‘sunset’ directly SW of the NE actual setting. curious. Over all sound / feeling of a gold brass symbol being played continuously today... an uptake in breath and higher frequency to the beating of my heart. I have known of Sekhmet before in my journeys.”

Ask yourself, What makes anger sacred? And ask yourself, what offends me and makes me angry personally? Learn to tell the difference. And remember the personal adage of Socrates: “Whoever can be offended deserves to be.” I have a simple rule of thumb for applying this ruthless maxim: when the offence is not deliberate, i.e., wrongly taken as offence but not intended as such, look to the ego of the offended party; when it is deliberate, look to the motive of the offending party.

When deliberate offence is committed, it ought to be honest and transparent, self-declarative, “front-loaded.” Sadly, this is rarely so and few people will admit to intending offence.

The human species is a touchy bunch of wounded animals, like the survivors of a pet shop that was being transported in a sixteen-wheeler that crashed over a bridge.

Or to use another metaphor close to the same vein: You can take the dog out of the pound, but you cannot take the pound out of the dog.

MESSAGE FROM MALLORCA

Pronounced My-ORE-kah. A good omen for the journey underway: recently I received my first email from a genuine sailor with a background in shamanism, who has signed on the mothership crew:

“I was born in Mallorca and live in the country side, near Buñola. I have a vegetable garden, orange and almond trees. I love nature...”

I was married to a Spanish shaman who passed away a few years ago. He was quite a character... He could create rain out of a cloudless blue summer sky; he could stop the time at an airport; change time; create a new reality... I learned a lot living with him.

I am a language teacher. Unfortunately I lost my job at a Catholic school last September for “not fitting in”. I do not believe in any coercive or paternalistic religion. I guess I was quite outspoken about it. I did my best to wake the children up. I stood against having my school children vaccinated.

I am now sailing along the southern coast of Turkey. I am also a sailor. I have brought a catamaran from Mallorca, Spain to Turkey. It was quite an exciting trip. We sailed to Sardinia, Lipari, Stromboli, Sicily, Corfu and the Ionian islands, the Corinth canal, some of the Greek islands Bodrum in Turkey, and now I am in Marmaris”

Mallorca is an island belonging to Spain located in the Mediterranean off the Costa Brava. It is widely known through connection with the poet and mythologist Robert Graves who lived there, in Deja, for many years. He used to take magic mushrooms and go into ecstatic trance. He was apparently the key person who signaled R. Gordon Watson to the mysterious business of ancient mushroom mysticism, citing the example of Portuguese witches using mushrooms to divine and cast spells. This set Wasson off on the quest that eventually led him to Mexico where he met Maria Sabina, the Mazatec

shaman who allowed him to participate in a mushroom ceremony — thereby launching the psychedelic adventure of the 1960s. Graves even claimed to have written *The White Goddess* in such a trance. As you may know, *Not in His Image* has been compared to *The White Goddess* as a manifesto of the goddess revival.

Deja (pictured) is a medieval seaside stone village, perfectly preserved, a UNESCO treasure.

Recently I read Graves' poem *The White Goddess* on an interview on Grok the Talk. Just after that I got the above message. It's great to have a sailor from Mallorca in the crew. I may take a trip that way before too long. My friend Elisabet Sahtouris, a brilliant evolutionary biologist and proponent of Gaia theory, also lives there, on Deja, and has invited me to visit several times. The life of a Gaian tertion does include some fantastic perks.

ON THE BRIDGE

I have not always included your observations in my notes to the crew, but I do read them all, carefully. I select what I find appropriate as the journey proceeds. The work I am doing requires that I am constantly on the bridge, poring closely over charts and star lore. Occasionally one of you hands me a dispatch containing your report or observation. Concentration requires that I stay on the bridge at all times, so I appreciate having your observations brought directly to me here without requiring me to look elsewhere. After considering other options that might have rendered my task easier, streamlined the routines, etc, as noted above, I find this one to be clean and efficient. You are of course at liberty to share your observations among yourselves, if that suits you. But conversations off the bridge are extraneous to this navigation experiment.

Lately I have been involved in converting the tertion's casita into a ritual setting for stellar navigation, a kind of virtual bridge. The upper terrace is the observation deck, providing a perfect view of the night skies. I have just converted the lower terrace to the "chart room" with shelves for astronomical books, zodiacal art, naked-eye lore, etc, places to display chart work in progress, drafts of zodiacal figures, a tilted drafting table equipped with compasses, rulers, a pantograph for transferring star composites to navigation charts, and an ellipsograph for plotting the course of the mothership in some fidelity to the oval-shaped orbits of the planets. The physical arrangements are about halfway there and a number of illustrative charts are in progress. Coming your way soon.

There is a huge amount of exact data to compile in the process of charting correction. Mainly I am making a three-point correlation: astronomy - mythology - psychodynamics. It's all going quite well and I can assure that my task as navigator keeps me at the peak of my tertonic skills. This is the greatest challenge I have ever undertaken as a stellar mythologist, to say nothing of the shamanic aspect that is due to unfold soon as I go to Infinity Ridge to encounter the Organic Light and investigate the more recondite features of Sophia's recapitulation.

AVATARIC INTERVENTION

My main intention in this practice of telestic shamanism is to determine the terms of the human experiment as Sophia originally dreamed it in the Pleroma, prior to her plunge. I know already there are two components of the experiment that need to be discovered and put into clear syntax: the RISK she set up as a challenge for the human species to overcome, and the PACT she made to protect the species in the event that the challenge threatened our survival. There is a risk in our experiment, a high-stakes risk, I would say. Risk makes Pleromic experiments of keen interest to the Aeons, who never know how these adventures are going to turn out. They gamble wildly on the outcomes.

The Gods are addicted to gambling.

Bear in mind that the risk Sophia set up cannot be facing the Archons because the presence of the archons was not included in her original dreaming of our current experiment. The archons arose later as an anomalous factor. Sophia then introduced the special measure of endowing the anthropos with the luminous epinoia, the power of imagination, enabling us to defeat the archontic factor — Fine, that is clear enough, so it has to be realized that the archontic factor does not constitute the risk or threat factored into the original experiment. Consider that plot twist carefully.

As for the pact Sophia made with that strain of the human species destined to carry out her singular experiment, I have been following her recapitulation (tracked on the lunar apogee surges) close enough to determine this key point so far: it was designed in her solitary mind to be an avataric experiment. That is to say, she made a pact that she herself would intervene avatarically if it came to the point where the human species was at mortal risk due to the threat inherent to the experiment.

Until now, I have emphasized that Aeons do not interfere in experiments they set up in the spiral arms. But this is not strictly and exclusively the case. They let experiments unfold on their own terms, yes, always with a factor of novelty and chance, including risk, because the factor of risk makes the experiments worthy of interest. Aeons are not omniscient and cannot fore the end of the experiments they generate. In some cases, they will intervene in an experiment in the form of an avatar, “one who descends” i.e., comes down from the Pleroma. The prototype for this scenario is the Hindu myth-sequence of the ten avatars of Vishnu, the Dreaming God — that is, any Aeon with its dreaming or emanational powers. Vishnu is the generic name for a dreaming Aeon. Occasionally Vishnu manifests in one of the dream/experiments he generates: this is avataric intervention. The cosmic dreamer appears as a character in his own dream.

Originally, Sophia imagined that our experiment now unfolding might entail an avataric situation. She pictured herself as the intervening deity, of course. From the Pleroma, she would descend and manifest in some form at the critical moment of the experiment when the inherent threat of human extinction was too powerful, if that moment came about. Such, in loose terms, was the pact she made with our species.

As I have noted already, the Greek myth of Andromeda, the fallen woman who is rescued by the hero Perseus, contains the memory of that pact. But we do not see the myth correctly in its received form, with a masculine hero and a helpless female victim, etc. Andromedans who represent the control group to our experiment remember the true form of the pact. In the recapitulation of the wisdom goddess now underway, Sophia herself is recalling this pact, and we can do so with her, simultaneously, in real time. The key moments of recall of the Andromedan version occur with lunar apogee transits aligned to M 31, the Andromeda galaxy: culminating in January 2012.

In the Andromedan version of the pact — which you can access in dreaming and by inviting your double to meet you — Perseus is Kali the wrathful form of Gaia-Sophia. Perseus means “destroyer.” Kali-Gaia is right now destroying the archetypal structures of paternal/patriarchal control, the psychodynamic grids laid down by historical experience, which are held in solution by anaerobic file-systems in the biosphere. The Greek myth restored to its correct form shows Sophia herself coming to rescue Andromeda — Hence Andromeda, mysteriously named “she who guards manhood” — must be humankind itself!

Yet how exactly we the human species have “fallen” remains to be seen.

If you get this picture, you can see there is yet another hitch in this cosmic adventure of ours: Sophia intended it to be an avataric experiment in which she would intervene against a mortal threat at the necessary moment and descend from the Pleroma, appearing in some manner among humans on a planet in the spiral arms. Well, that moment has come. But Sophia is not in the Pleroma, is she? No, she is **IN THE PLANET** where the experiment she dreamed is unfolding, but she did not anticipate that turn of events, did she? Her challenge, then, is to achieve the equivalent of an avataric intervention from the condition of her full embodiment as a planet. How is she going to do that? How will she achieve the originally dreamed rescue solution in her current state of planetary homeostasis, an anomaly for an Aeon?

The way to find out is be involved in the solution with her as it unfolds in real time. And that, I reckon, is the **ONLY** way to find out.

More at D 13 of this shift.

Safe Passage to all,

your nav



.....

Correction of the Sophianic narrative: synchronicity

8/8/2011

Hello Crew,

Wanted to share this with you right now as it happens:

Just a moment ago the email below came into my post on the bridge. At the exact moment it arrived I was occupied in changing some of the language in the nine-episode version of the Sophia mythos:

<http://www.metahistory.org/GAIA%20SOPHIA/Synopsis9SM.php>

The changes concern replacing Thelete, the Intended, as the counterpart to Sophia in engineering the human species. As distinct from the previous version, reflecting Valentinian Gnosticism, that makes Christos the counterpart. The Christos variant is not absolutely wrong but it is not preferable for the process of engaging the narrative in correction. I need to make it clear in upcoming talks and material on metahistory.org that the narrative in correction strictly follows the Sethian Gnostic view, making Thelete the co-parent of our species.

Thus earthbound humanity is the offspring of wisdom and free will. Does that make sense?

The Valentinian variant in its spoken versions can remain as an option, showing that variants did arise at the moment that Gnostics went public. Or those narrations can be revised, depending on the choice of those who did them. Note that the unfinished prose poem has Thelete for Sophia's consort, not Christos. In future talks I will be rigorous and explicit about this change. It is entirely my fault that the Christos variant came to be used initially, in my book as well, and this crucial detail needs to be corrected...

Needless to say, altering the syntax of the master narrative is a delicate matter. I am confident of the change but I must admit some concern about how it will be regarded... Well, read on.

To get to the main point of this message: In doing the revisions (text in red) just now, I made sure to highlight the unique property or capacity of the Aeon Christos: chrismation. Due to its chrismating power, this Aeon is called "the Anointing." This process is also called gemmation, or nucleation. It is the special property of the Aeon

Christos that allowed that entity to intervene in Gaian symbiosis at the critical moment when endosymbiotic boundaries needed to be set. In future, I will have more to say about this particular distinctive property of the Aeon Christo, the “milk and honey” effect. Gemmation is a crucial factor in the emanation of Aeonic experiments involving sentient life-forms, as well as a distinctive biological process in the natural world.

Chrismation, nucleation, gemmation — are all fancy names for “budding.” Just as I wrote the note on gemmation, or budding, this email arrived.

Read and enjoy,
your nav

----- Original Message -----

Subject: Re: Crew Notes #5:

Psychic Eruptions, Sacred Anger, Avataric Experiment, and More

Date: Mon, 8 Aug 2011 14:57:12 -0700 (PDT)

From: Stanton Finley <stanton_finley@yahoo.com>

To: “navigator@metahistory.org” <navigator@metahistory.org>

Cc: Michelle Sellers <michelle.sellers@comcast.net>

John, I believe that Gaia-Sophia will achieve avataric expression through humanity itself which grows out of her like buds on a stem, that those aligned with her, enlightened by her story and purpose and bathed in her organic light will be the instrument of her correction and the warriors of her divine destiny.

Best,

Stanton Finley

*>If you get this picture, you can see there is yet another hitch in
>this cosmic adventure of ours: Sophia intended it to be an avataric
>experiment in which she would intervene against a mortal threat at the
>necessary moment and descend from the Pleroma, appearing in some
>manner among humans on a planet in the spiral arms. Well, that moment
>has come. But Sophia is not in the Pleroma, is she? No, she is IN THE
>PLANET where the experiment she dreamed is unfolding, but she did not
>anticipate that turn of events, did she? Her challenge, then, is to
>achieve the equivalent of an avataric intervention from the condition
>of her full embodiment as a planet. How is she going to do that? How
>will she achieve the originally dreamed rescue solution in her
>current state of planetary homeostasis, an anomaly for an Aeon?*

.....
Face in the clouds; Sophia and the Primal Threat

8/10/2011

Hello Crew

Forwarding this link sent by a crew member:

http://www.youtube.com/watch?v=gdg6WU_aqWE&feature=youtu.be

Does Gaia-Sophia reveal her face in the clouds in this manner? She can. I have seen her do it on Infinity Ridge. I would have you note though, that other cloud revelations I have seen refer to the demonic forces she is facing, with us, as much as to her own epiphany. For instance, the cloud form of a archon I saw over Gaucin, exactly as I had drawn it years before.

Note here, the image seems to morph into what I call “the satanic mask of Dagon,” signaled by the stars at the head of Cetus.

The distorted pentagonal composite beneath Jupiter is the head of Cetus, AKA Dagon. During the crucial first phase of correction, Jupiter comes to position itself directly facing this formation, hovering over it, as it were. Slowly, month by month, the lunar apogee advances through the FISHES to the point when it will pass where Jupiter is now. It will transit directly the stars marking the “satanic mask.” This happens in spring of 2012.

LO on this illustration is lunar orbit. The two black diamonds show where the lunar apogee (divine memory: recapitulation of the wisdom goddess) moves through the FISHES from March 2011 to January 2012, when it passes into the RAM. As the lunar apogee advances in the FISHES, Sophia recalls the pact she made with humanity based on the initial conditions of the experiment she dreamed for us. As I have said several times already, in several ways, the control group on our parallel world in the Andromeda Galaxy preserves the memory of this pact and the initial conditions of the human experiment now unfolding here on earth.

THE CORRECTION OF SOPHIA TAKES PLACE IN THE APSIDES OF JUPITER. You can see how the perihelion of Jupiter stands in the FISHES, and the lunar apogee has advanced over that locale: apogee surge July 21 in 16 Aries, ecl 16, midway in the FISHES. You can go out on these summer nights and observe this point, as well as the full-length formation of Cetus floating beneath the FISHES, with Jupiter looming over its head.

GO AND LOOK AT IT. You will notice that the distinct formation of the “satanic mask” is unmistakable, a distorted pentagon with the pointed chin or goatee. In its entirety, the formation of Cetus/Dagon looks like a floating corpse, a drowned man floating on his back. It has a spooky, dead or paralyzed feeling about it.

Check online software such as stellarium.org to know when this formation is visible rising in the east from your locale. But do not rely on that software in place of actual naked = eye observation.

Note the alignment shown by the stars forming the cord attached to the leaping FISH, pointing directly to M 31, the Andromeda Galaxy. The exact degree on the ecliptic is 28-29 (Aries) from May 22 to June 5, 2011, just preceding the inauguration of the Gaian navigation project.

Currently you can observe M 31 late in the evening; the most distant object visible to the naked eye. Said to be located at a distance of 2.2 million light-years.

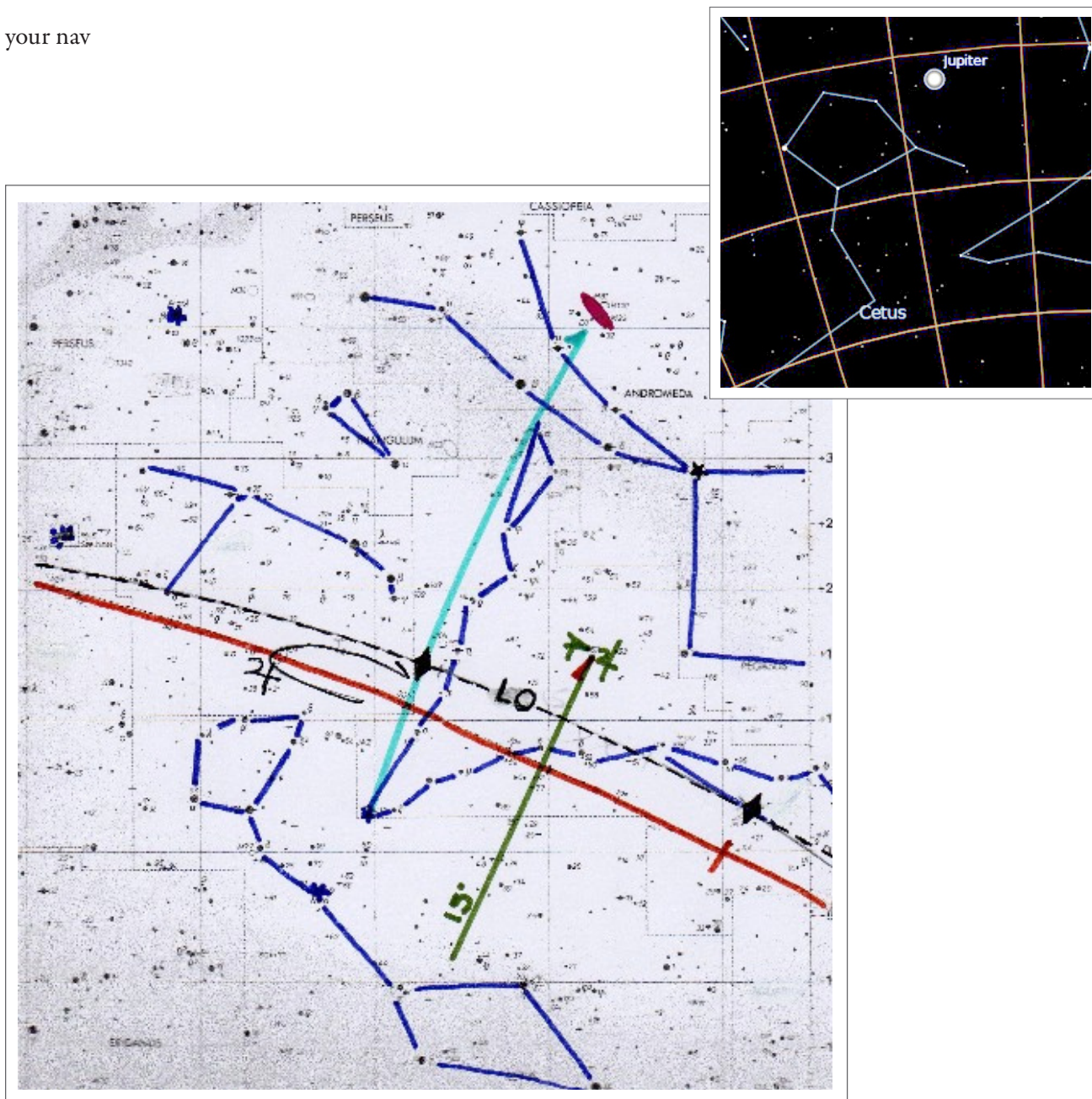
Note that Jupiter advances from the FISHES into the RAM (composite stars above the ecliptic line) and then goes retrograde: August 31, coming up. It then reverses for 5 months, back to ecl 31, about two degrees from alignment with M 31. You can actually watch Jupiter reversing against the zodiac from late august through to the end of this year. The retrograde motion of a planet is apparent: Jupiter appears to drop back against the natural order of the zodiac, as a car appears to drop back against the landscape when you pass it, moving at a higher velocity. The retrograde motion happens as the earth in its orbital track overtakes Jupiter, on an outer, more distant track.

The retrograde phase of Jupiter in 2011 and the advance of the lunar apogee to the face of Dagon are signals of tremendous, unprecedented events in the story of our species, an opportunity unlike any other, past or future. Seeing the true face of the wisdom goddess, we also see what she sees: the satanic mask and what hides behind it. Evil is a mask. What hides behind it is not evil as such — for there is no autonomous evil agency in the cosmos — but a destructive force that threatens humanity. The ultimate threat. No, it is not the archons, because the threat posed by the archons was not present in the original singular dreaming by which Sophia in the Pleroma set up our experiment. The archontic threat is an unanticipated factor that came later. There is another threat included in the initial conditions of our experiment as Sophia dreamed it in the Pleroma.

To know what this is, we keep a vigil on the head of Cetus, the satanic mask of Dagon. We contemplate that starry apparition.

As for Sophia's epiphany in the clouds, we may well see it. But we may also see images suggesting what she sees, the way she fixes her sight on the ultimate threat facing humanity. In correction, we come to define exactly what that threat is. What is that ultimate threat to the divine experiment on earth, lurking behind the satanic mask of evil.

your nav





Crew Notes #6

• *Chained Humanity, Current Events, Russian Revolution, Call for Volunteers* •

8/12/2011

Hello Crew

It's day 13 of the current Bhairavi shift and I'm due to send out another installment of crew notes, following the usual pace. However, this time I am writing a new piece (3) for *READING THE CAPTAIN'S LOG* which will take the place of this installment of crew notes. I will of course signal when it is posted on metahistory.org. This essay treats the recapitulation of the wisdom goddess using the Andromedan myth of the chained woman — note the correction of language here:

CHAINED HUMANITY

Previously, I may have referred to Andromeda as the fallen woman, which is incorrect. Since I knew for quite some time that the received form of the Greek version of the myth of Andromeda preserves the original terms of the divine experiment Sophia dreamed for humanity, I associated the “fall of the goddess” theme with Andromeda. Hence the glitch, fallen woman. But Andromeda is “the chained woman” in mythopoetic terms. Not fallen. As the outlines of the “initial conditions” of Sophia’s dreaming of this experiment become defined, we come to see that Andromeda — representing humanity itself, not the fallen goddess — is chained to, or enslaved by, a menace, an ultimate threat of some kind. What exactly is that threat? Some of you have already written with your insights and intuitions on this tremendous question.

“Is the ‘destructive force that threatens humanity’ death? Were we not originally fashioned as “...the ‘immortal luminous child, the Anthropos...”? If Gaia-Sophia in her correction is modifying the very fabric of our DNA, our genetic blueprint to effect the changes she envisions, may she also be restoring the original pattern that is the ‘immortal luminous child’ that was seeded in Orion. If so, what happened that changed that design? What brought death to mankind and thwarted the design of the Anthropos? And if I am correct, how does she intervene to help us defeat, to quote Castaneda ‘our only worthy enemy’ ”?

*We are star dust
Billion year old carbon
We are golden
Caught in the devil’s bargain
And we’ve got to get ourselves
back to the garden
— Joni Mitchell*

I am sure that thoughts like this are welling up in the minds and hearts of many of you. Please continue to send me your views or inspired guesses on what the ultimate threat to this divine experiment might be. And remember that in visual terms, in the genre of “naked-eye mythology” (as I used to call it way back in Santa Fe), you can actually SEE the threat by observing CETUS, the massive constellation that stretches below the FISHES. The distorted pentagon of stars forming the head of CETUS is like a shoal of sharp, menacing rocks that the mothership pass to make safe passage on her journey. Right now the celestial tugboat Jupiter is positioned close to the shoal, towing the mothership into a course to sail by it safely on her own power.

The first stage of self-propulsion begins on August 31 when the mothership engages her engines which are currently still on idle. At that moment Jupiter turns retrograde: the tug starts to back off its position at the heat of CETUS, shifting back toward the FISHES. As it does so, the towline used to pull the mothership goes slightly slack — picture how this occurs — and the mothership gets to try her self propulsion system for the first time.

In the received form of the myth, Andromeda is chained to a rock by the sea, held captive and due to be devoured by the sea monster CETUS. How is humanity chained, and what is the monster that threatens to devour us? Reflect on these themes and see what your imagination tells you. As a tertion and sky-diviner, I am using all my skills to track the

process of recapitulation. Certain features of the pact Sophia made with humanity can only be known in real time, as she recalls them. To follow her memory I use the advance of the lunar apogee in the zodiac, through the FISHES with the constellations of Pegasus and Andromeda above — you know that already. But you also, in your dreams, intuitions, and imaginings within the frame of the sacred story, are prone to receive clues and cues regarding what Sophia remembers. Visions of the Organic Light are becoming more and more frequent. One crew member reports:

“Last morning I walk up but wanted to go back to sleep as I was still tired so I started meditating to help me go back to sleep, during meditation I saw for a split second a white baby owl, it was standing but leaning on something like it but bigger, as if it’s mom, the color was strange too, it was white but like baby white, it’s like a mixture of light and cloud, it’s tangible but dreamy, it was strange, this is the best I can describe it, and it had a good feeling with it, like the baby owl was happy or smiling, and it has an innocent feeling with it.”

Interestingly, this dream epiphany of the Organic Light carries a clue to the oppression of humanity by those who embody and implement the ultimate threat: the owl, taken as a symbol of Moloch and the occult power of the New World Order psychopaths — if you believe that line of interpretation. The owl is the totemic bird of Athena, a warrior-goddess. Feminine rage figures like Athena, rather than the male stereotype Perseus, are true intimations of the rescuing power of Sophia. Rescue is not redemption, by the way. My recent revelation that Sophia’s dreaming of our experiment is an avataric scenario may have given some of you a shiver of discomfort. But avataric intervention of the kind entailed here has nothing to do with the messiah or savior complex of salvationist religion. Rescue is not redemption. Keep that distinction clear in your minds.

The hero Perseus (read: Kali, the wrathful form of Gaia-Sophia) comes to the rescue. To do so, he uses various powers: the winged sandals of Hermes, the helmet of invisibility taken from Hades, a sword given by Athena, also a shining shield that acts like a mirror. Looking into the mirror, Perseus slays the Gorgon Medusa, then uses her head writhing with snakes to paralyze the sea monster, Cetus. From the severed neck of Medusa spring Pegasus, winged imagination.

All the elements of this myth translate into features and terms in the original dreaming of Sophia. I invite you to decode this myth with me as correction unfolds in real time.

CURRENT EVENTS

Right now, I'll use this opportunity to thank you for your input and advice regarding my email problems. The glitch is intermittent and looks more or less to be solved

Also, thanks for the observations and links you are sending. I look carefully at everything that comes in. Some of you have noted that social unrest, violence, and riots are breaking out during this shift. Bhairavi represents the rage of Gaia, an aspect of Kali as Durga, Invincible. Insurrection would seem to fit in her shift. But the larger truth is, social violence and insurrection have been brewing for quite a while, and there is undoubtedly much more happening — in China, for instance — than gets reported either on the mainstream news or the alternative media. You don't have to be Nostradamus to see that violent resistance is well underway on this planet. We are at the threshold of a global uprising and many social events to come will express rage and revolt against domination, deceit, manipulation, lies, all the strategies of the Authorities.

The problem with social violence is that it is not aimed. It can easily be co-opted by the powers that be, as we have seen time and time again in the last century and increasingly in this one just dawning. Worse, social violence when it is undirected often spills over on the wrong people, as seen currently in London. The riots, which may well be orchestrated as part of a deliberate strategy to impose martial law on the country, are inflicting huge damage on ordinary, decent people and businesses. So far I don't see this kind of violence being directed toward bankers, the media whores, politicians, and the Authorities. Shoot off a semi-automatic machine gun in a crowded room and you may hit a lot of people who are not part of the problem, while the perpetrators go untouched.

We will know that the tide is turning when news breaks of violence toward the Authorities and those they protect, the intra-species predators. I have my own small contribution to make to that trend, coming up soon in correction.

I also intend to talk in upcoming interviews about the Russian Revolution and the role of the Sophianic vision in social revolution. Those of you who have not yet studied the Russian Revolution, I suggest that you do so by reading *To the Finland Station* by Edmund Wilson who also wrote a seminal book on the Dead Sea Scrolls (an important clue to the ultimate threat). Combined with the following article:

<http://www.gnostics.com/newdawn-1.html>

The Russian Revolution provides excellent background to upcoming social unrest due to escalate perilously throughout the three years of correction.

VOLUNTEERS

Some of you have written offering to help with various aspects of this adventure. I prefer to hear from volunteers rather than call for volunteers but right now I am facing an exceptional situation due to a particular project to be realized on August 30. That is 16 days from now. To pull off this project I need distribution lists of email addresses comprised YouTube channels and sites of three kinds:

- 1) Those that carry interviews with me. Including some blogs and forums, perhaps.
- 2) Those concerned with crop circles.
- 3) Those concerned with informing the public about free energy

With one volunteer for each list, the task here requires simply compiling addresses in a file. Then, on the 30th, I will send out a short message with a link to go out to all addresses in the list. The way this would work, the volunteer would keep the list, not send it to me. Or perhaps one volunteer could manage all the addresses gathered by three others and register them in three separate distribution files here on the nav post on the server. I can't be involved putting names addresses submitted to me into a list. That task is just too tedious and time-consuming and drives me up the wall.

According to this plan, all recipients will receive the same message with a link to the video clip that I will post on August 30: CHALLENGE TO THE CROP CIRCLE WIZARDS. In short, I want to do a large simultaneous mailing to put out the word about this clip.

On the subject of volunteers, I have another request. I would like to see all the material in the Crew Notes go into word format so that it can be printed out in a chronicle of this journey. Consider this a project that will extend over three years until Spring 2014. There will obviously be several bound volumes of notes, the record of this singular adventure. I see the notes converted into a printable form formatted neatly with the numbered and dated notes in one format, and additional material, PS, comments, in a different format, all of it in chronological order. It would require a little creativity to make it look good — if you get what I mean. The file of the printable chronicle would be available to everyone in the crew and eventually to anyone at all.

The record of this journey should be available in written form for future generations. Correction transpires in 10 seconds of Aeonic time: 10 X 108 days. The crew of the mothership have the unique opportunity to participate in correction in real time, as it unfolds. But the world at large will be living through it in another way.

If I am right in my telestic investigations, and correctly aimed in the nautical metaphor, the month by month accounts of this journey will be read and studied for the benefit of future generations. Even though the material is time-factored, proceeding in tight correlation to a unique sequence of planetary, lunar, and stellar formations, it is not rendered obsolete by the passage of time. On the contrary, it will become even more powerful as a visionary tool after spring 2014. People will look back on this three years and study how correction was charted by a handful of people, the crew of mothership earth, seminal to the Gaiaspora.

At the rate we are going, VOL I of the Nautical Notes of Sophia's Correction could be complete by early September. I would like to see the printed version made available as soon as possible in that timeframe.

thanks as ever for fidelity, vigilance, and kind attention,

your nav



Crew Notes #7

• *Solioonensius, Madness of Crowds, Continuing Anomalies* •

8/21/2011

Greetings Crew,

Well, how's to going out there? It has been unusually quiet on the deck, with few communications filtering in. There is at moments a static, listless feeling in the air, as if the mothership was caught in the doldrums. A sense of exhaustion, but charged with hidden tension. I feel at moment an almost intolerable anguish, deep and numbing. But is the anguish might be a raging animal pretending to drowse just before it lunges out, breaking free from its cage? I keep saying, "Somethin's gotta give." As a tantrika, I am used to operating on overwhelm. That is the nature of the practice, which uses intensity in all its hues and tones. But lately I am close to the limit of being overwhelmed. It's like being over-overwhelmed. The moments drag by with excruciating languor, yet it also feels like time is running out very fast.

I also have a sense of deep foreboding. Of dread expectation. I have not felt anything like this since the days following the assassination of JFK. A saturation of the collective psyche with dread and grief. I am feeling utterly and completely FED UP with lies, deception, manipulation, all that goes on continually in society and the world at large. Really FED UP. Yet I also have the creeping intuition that more is to come, more lies, more social theatre of absurdity generously loaded with murder and mayhem. More odious antics by the perpetrators. I do not want to shut my eyes to the evil to come, but I do not want to be consumed by looking into it, either. Nietzsche warned, look long enough into the abyss and the abyss will look into you. It was never more true than this month, August 2011.

The head of Cetus is the face of evil. I mean evil not as an abstraction or a cosmic principle, but merely as the source and summation of human potential to do harm to other humans, other creatures, and the earth. You have bravely enlisted in an experiment to look squarely into the face of evil. I believe that we have an exceptional opportunity to do so, right now and continuing into the fall of this year. We are all asking, “What is the ultimate threat to the divine experiment on earth, as Sophia originally designed it? To this moment in our species history, no one has known the answer to this question. Or if they have, the answer was lost. Now we have the opportunity to know. If you keep your hearts strong and your minds steady, we can look at it together. The effect of focusing all our concerns about the evil in our midst upon a single mythological image, and framing that image within a sacred story, is going to be

tremendous. Don’t take my word for it, just stick with the experiment and follow your own sense for truth.

TUGBOAT JUPITER

To return to the nautical metaphor that guides this experiment, let me tell you exactly what is happening.

Between the tugboat Jupiter and the mothership earth stretch two massive tethers, thick and round like the lines called hawsers you see mooring an ocean liner to a dock, made of braided rope. These dual tethers are the apsidal lines of Jupiter, stretching from perihelion (point of Jupiter’s orbit closest to the sun: 15 ECL or 15 Aries) and the aphelion (point of Jupiter’s orbit most distant from the sun: 185 ECL or 15 Libra). Since the spring, tugboat and mothership are involved in a maneuver to position the earth to undertake orbital motion by her own power, self-propulsion. The set-up for this maneuver is complex and delicate, requiring the utmost care to set the initial conditions for Sophia’s cosmic journey from here forwards. The tension involved in this set-up is immense and may feel at moments like a crushing weight.

Since late June the earth has been idling in a flat, glassy area of the spiral arm. Just sitting there adrift within the capture of the solar system. If you want to feel what the earth feels, and feel with the planet, then you have to be prepared for massive, overwhelming sensations. The impression of stasis, even stagnation, at this period is strong, but there is also the certainty that some power is due to come into play, some new energy, proceeding from the planet itself..

Around JUNE 24 the two tethers were laid between Jupiter and the mothership and secured at both ends, but not pulled taut. They remain slack, floating in the water between the two vessels. While this situation prevails, the mothership is free to drift around loosely on its mooring — the midstream mooring provided by the tug. As Gaia revs her engines and checks on board systems, the tethers keep her safely within a certain range of motion, not carried away in the celestial river but not self-propelled on it, either. She is drifting under control and setting up her correction.

Just after the summer solstice, around JULY 2, the mothership moved through her own aphelion (10 Capricorn: ecl 280) and swung into a clear sightline to Canopus (16 Cancer, ecl 106: opposite 286 or 16 Capricorn, just beyond the aphelion of the earth). At this moment the massive hawser connecting earth and Jupiter CAME TAUT, and the tug began to slowly RETRACT THE LINE, keeping it taut but not actually pulling the mothership.

From late June, all through July, conditions on and around the mothership has been exceptionally, uncannily calm. Imagine this situation: the mothership uses the auto-piloted movement inferred by the solar system as she curves around toward Jupiter, at the same time guided by the hawser, the tow-line. It does not pull her but keeps her steady in her course as she gradually disengages from the archtonic com-pulsion of the planetary system.

AUGUST 2011: about six weeks in all since the aphelion transit of July 2, the tow-line remains taut. Jupiter the tug is stationed in the constellations beneath the RAM, directly facing the satanic head of Cetus, the sea monster of Andromedan myth. The mothership rounds the zodiacal coastline with the GOATFISH off to starboard, and then advances along the MANITU, the Guardian, approaching the FISHES. As it does so it reaches a point about 55 degrees or days separation from the Jupiter tug.

In the latter half of August, the tension reaches a maximum: the tow-line is taut and retracting, making it even tauter. Then, around AUGUST 20, the tug which has been slowly advancing past the head of Cetus, STOPS AND BEGINS TO REVERSE. For ten days, AUGUST 20 - 30, Jupiter remains in the same degree, 11 Taurus: the tug is stationary. Then, on August 31, Jupiter turns retrograde: instead of advancing against the RAM toward the BULL (clockwise seen from above: the natural order of the Zodiac), it reverses, moving back toward the FISHES. With this motion, it slowly converges toward the approaching mothership coming towards along from the coastline of the Manitu.

As it does so, the tug continues to retract the tow-line that pulls the mothership into position for her course correction. But, because the tug is reversing rather than advancing with the earth in tow, the tow-line begins to slacken. This maneuver allows the mothership to test her own propulsion system for the first time. Her engines begin to engage propulsion from August 31st onward.

I emphasize that it is a gradual and delicate process, calculated to insure safe passage. The mothership engages self-propulsion while still relatively captured in the compulsion of archontic planetary dynamics, and eases over from one into the other. Picture the arrangements of the two vessels and you can see how careful this maneuver is: the tug backing toward the mothership, slowly retracting the cable and keeping it steady, but allowing enough slack (due to its reverse motion) to let the earth gear into self-propulsion. So unfolds the first stage of “coming about.”

The earth engages self-propulsion in three stages: August 31, October 8, October 29. The effect of this entire maneuver is that tugboat Jupiter steadies the mothership on her course and gives a sling-shot momentum to the passage she must make before the satanic head of Cetus. Imagine that the distorted pentagon marking the head of that constellation is a shoal of menacing rocks with a sea-cave that devours wreckage — I believe I have suggested this image before. the earth passes this shoal once each year. but this is the first time she will do so under her own power. That is why it takes such a slow and tedious maneuver to set up a safe passage.

What is happening here astronomically, following the nautical metaphor, also happens mythologically in the collective psyche of the human species, but the passage that reveals the true face of evil, the ultimate threat to the divine experiment on earth, is not observed by all passengers on the mothership, just those on the navigation deck. You’ve got your work cut out for you!

SOLAR MADNESS

Recent observations I’ve received have been scarce but very relevant. Some of you are noting that solar-earth transactions are getting to be extremely intense. We are on the verge of understanding firsthand how the electromagnetic field of the earth responds to solar plasmatic discharges, and how the human species is impacted, both individually and collectively. We learn about this under extreme conditions.

On a recent talk with Thomas I noted my impressions of lassitude and innervation perhaps due to the increased solar activity. Also the excruciating sense of inner tension.

Since the solar activity is now reaching extreme expression as the mother ship makes her critical adjustment, and this happens at the height of summer, some of the solar plasma effects may be disguised in heat exhaustion, or mistaken for it. I joked about this in the interview, saying that people would be dropping like flies. One crew member sent in this report:

“hi john....I could not stop laughing upon hearing pt talk # 13.....;before I got home and listened to the interview, I was at a concert/festival just outside of Seattle. now, its 81 degrees today, not super hot, warmer than usual, but not like Arizona, that’s for sure. so I’m standing on a food line to get some lunch and I notice the guy in front of me beginning to wobble and he’s looking around with very glazed eyes.....I have medical/emt training and recognized he might be having sunstroke. while I am just thinking this, he falls, plops right on the ground. I sort of catch him, feel his skin...heat stroke. I just point to two guys and say, hey, we gotta get him into shade-now. I see some guys with a bucket of ice selling cold water. I tell them to bring the ice and water to this tent where we’re takin’ this guy. so I lay him out... within the next 15-30 minutes, people are being brought into the tent. we had 18 people laid out....81 fucking degrees !! are you kidding me? in Seattle no less... and then I come home, take a shower and listen to you and Thomas and you sayin....” in Seattle today, people were falling like flies....” a young woman was telling me she hiked in Utah, new Mexico...never felt like this. the guy who fell into my arms was 41 with no medical history saying to me over and over, I’m in great shape, I ride bikes, hike, swim.... another older woman was completely freaked, said she never had this happen.”

There is of course huge speculation on how electromagnetic flux excited by solar eruptions can and will effect human beings. Based on his study of sunspots, Russian scientist Georges Lakhovsky (1869 - 1942) concluded an intimate relationship between sunspots and social conflict, including wars. He also showed that human cells emit electromagnetic frequencies. We are seeing his work proven true right now. Good time to bring up the concept introduced by a contemporary of Lakhovsky, Gurdjieff (1866 - 1949: the cosmic law of “solioonensius”. It means electromagnetic TENSION centered on the sun which distributes it to the entire solar system. Gurdjieff claimed that solioonensius is a long-interval process that exerts tremendous pressure on humanity, provoking a drive for freedom, religiosity, and madness of crowds. If this force is not given proper direction, it results in chaos and catastrophe. the threat here is not an external cosmic body (though Gurdjieff stated that comets can be involved) like Elenin or Nibiru (which I take to be scaremongering hoaxes), but internal dynamics of the system, the earth-sun coupling, etc.

Apparently we live in an exceptional time when solioonensius has erupted twice within a century. The first time was during the Russian Revolution. I have advised all crew members to brush up on the Russian Revolution and read the article on the Gnostic and Sophianic elements in that vast social upheaval. I firmly believe that the RR was the prelude to the coming planetary revolution. What we learn from the RR can be immensely helpful. In the first place, it was rigged to put the Bolsheviks in power — this is of course a familiar tactic of the NWO bankster mafia, hijacking popular revolutions and running the controlled opposition, etc. But in the case of the RR we see that some elements of Gnostic and Sophianic vision were present, although not strong enough to provide an AIM for the revolution. Because solioonensius entails a massive, aimless discharge of rage for freedom, it easily goes wrong if it is not given direction. This would be the challenge of the current event. This time humanity has the Sophianic myth for aiming itself toward a future social order of mutual aid and compassion. The Russians only had glimmers of this myth in the presence of the Hagia Sophia who inspired Solovier, Blok, and many others.

IRRITATION

One crew member offers these observations regarding possible effects of solar plasmic excitation:

“I wanted to communicate to you some of the strange symptoms I have noticed in my body over the past year or so; that may or not be related to Gaia’s awakening or the recent influx of solar flares. It’s difficult for me to describe, but it would seem that a lot of tension was released in my body and my body wants to realign and correct itself. It feels like all the webs of myofascial tissue, muscles, and ligaments that connect the body need to be re-positioned.

“Oftentimes the webs of connective tissue almost feel like little threads or wires that are metallic in nature and need to constantly be manipulated before they are malleable enough to put my joints and body into place. Because of this state I occasionally have what I suppose would be called headaches, but is just an irritability caused from the stretching of tissue and skin surrounding my head. This irritability is not localized to the head but can be found in various parts of my body, depending on which areas I’m trying to loosen and realign; which can cause a light-restlessness and a lackadaisical mood. Additionally, I can really feel the out of place tissue and correct it when doing deep guttural chi breathing.”

I also have noted terrific irritation, but mentally, emotionally. Also some skin irritation perhaps. Most of all, I have the sense of a volcanic build-up of rage which is not just my own but belongs, I suspect, to the collective psyche. As I said above, I am FED UP with the endless lies and murderous deceit perpetrated by certain countries of this planet, one in particular.

Another report: *“Well when I wrote to you telling you that it was hard for me right now... Ha I just could not just quite say to you...I was toast...I dream walk with no passion or caring... I am adrift with no breeze...I am hollow...even my rage is disconnected....it’s there and, morally flickers at the endless psychic driving of stories, each one more fucked up than the last....Padded bras for four year olds, cops frying and beating people....often the wrong people... I was struck by your phrase “moral exhaustion”...Yes that’s it. And by the way it is not heat exhaustion it’s been a very cold winter here with the first snow in Auckland since Hitler was TIME’s man of the year.”*

Moral exhaustion, as humanity is pushed to the limit of its tolerance for being fucked with, flagrantly and endlessly. The observation about winter in the southern hemisphere is telling: I suspect that after the summer heat breaks here in Spain, the same effects will continue into the fall and winter seasons. The seasonal heat in the northern hemisphere has merely veiled the other effect, so far. Also, I would guess that it is going to bet a lot colder all round the world. There will be moments of extreme heat but in general, we’re may be heading for a big cool-off, weather-wise.

ANOMALIES

A week or so ago someone posted an extraordinary clip on sounds heard in the Ukraine,

<http://www.youtube.com/watch?v=c7IzivFtqBk>

One person who commented noted how much the noises resemble nautical sounds or the heaving a huge vessel makes in dry dock. The clip may however be a fake. There is a terrible tendency to hoax everything on the internet. I guess people do it to amuse themselves or see how many hits they get. I am also royally FED UP with that kind of behavior.

Personal, first hand anomalies are more reliable:

“Hello nav

I was sitting on my deck in Tucson watching the moon rise over the Catalinas (stone cold sober I might add) and suddenly there were two moons. I couldn't believe my eyes, two giant slightly irregular orbs just post full moon. instead of the usual serene pathway the moon usually takes, they were vibrating and moving close to each other, then moving away, then seeming to move close to me and then back to their usual arc. The faces were slightly impish wizzardlike bordering on witchy, at times seeming distorted, and then for an instant they morphed into mushrooms (yes) and then after 45 minutes joined together, but the vibrating never stopped.

Very anxious lucid nightmare ABOUT having a lucid nightmare (personal stuff) after that.

Whoah!!!!!!!!!!!!!!!!!!!!!!

Any other reports of two moons?”

Also, I get inspiring accounts of taking the Gaian Tantra Vow, and dreams of white animals and other epiphanies of the wisdom goddess. I just don't have the time to collect these and compile them into a file but if someone could handle that task, I will forward those messages. Right now there is not a lot of examples, half a dozen or so, but it would be good to have them in a file for all to see....

finally, some of you have been asking me about crop circles. I have a little project in the works to answer your questions on that topic. Meanwhile, this just came in:

Huge Sand Formation Reported Southwest of Xining, China

[http://www.earthfiles.com/news.php?ID=1882&category=Environment.](http://www.earthfiles.com/news.php?ID=1882&category=Environment)
[earthfiles.com/news.php?ID=1882&category=Environment](http://www.earthfiles.com/news.php?ID=1882&category=Environment)

I will address the crop circle issue soon. But as a preview, let me say that I don't hold to the view that they are created by ETs, or that they are messages from the earth, from Gaia-Sophia herself. So in my view, we can eliminate those two suppositions.

Temporary Temples Newsletter 2011 - 30 shows a crop circle of a typical Grey ET head with a halo of 28 spheres of different sizes, arranged, 4 X , reference to the lunar cycle. The ET is smoking a meerschaum pipe as fairy folk are known to do in Irish legend.

There is a wisp of smoke coming from the pipe. I take it this is a joke but what if the crop circle is genuine? Someone is sending a message. How do you read it? I read it perhaps this way, taking a Gnostic spin: The notion that ETs created the moon and set it in place as an artificial satellite is a pipe dream inspired by the ETs who would dearly love us to believe it's true. Is this formation a flagrant jab at Icke's notion of the moon matrix? If so, who is making the jab?

That's it for now,
signing off
your nav.

*From: "navigator@metahistory.org" <navigator@metahistory.org>
To: Lydia Dzumardjin <lydia@metahistory.org>
Sent: Tuesday, August 23, 2011 3:10 PM
Subject: **Crew Response on Authenticity of Ukraine Sounds***

----- Original Message -----

*Subject: Re: Crew Notes 7:
Solioonensius, Madness of Crowds, Continuing Anomalies*

*Date: Tue, 23 Aug 2011 23:49:16 +0300
From: Andrey Zamaraev <samuraefff@gmail.com>
To: navigator@metahistory.org*

Dear Nav,

Sounds you mentioned are very inspiring

(<http://www.youtube.com/watch?v=c7IzivFtqBk>).

I'm from Ukraine myself and can hear young girl Alionka and her mom are speaking clear Russian on this movie. Girl is probably 3 years old, her sentences are not perfect, but I think she really heard these sounds and her intonation is pretty honest. Also her younger brother babble is audible.

*That is my rough translation of dialog between mom (M) and girl (G):
(03:37)*

M: What, Alionka?

G: These sounds.. They are dropping like a sky. They are scaring us.

M: Scaring?

G: Yeah.

M: And what are you thinking these sounds are?

G: I know! They are dropping in the sky. They are very far away.

There... they are scary. I wanna see them in microscope.

M: Aliona, sounds are not viewable in microscope.

G: And microbes? Microbes are there in microscope?

(babble and mom's calls to be quite)

(06:56)

G: ... beasts!

So, at my opinion, sounds were really audible and it is not a sort of audio montage. Although the source of these sounds can not be clearly defined. This could be some 'dark ambient', mom was listening to, and girl just dreamed up about a music. Or they were really from a sky :)

Thanks,

Andrey

.....

Re: ultimate risk

FROM: navigator@metahistory.org

TO: sherry reed

Thursday, August 25, 2011 12:44 PM

Hi Sherry

Well, that is exactly how this experiment works. I am inviting a number of people to look together at an observable pattern in the sky, the satanic head of cetus consisting of a distorted pentagon, AND simultaneously to imagine they are looking into the face of the ultimate threat to the divine experiment: observe it and see it mythologically at the same time. In sorcery terms, align the first and second attentions, observation and imagination, or dreaming. Doing so, you not only go to the very brink of your attention capacity as a human being, but you invite the boost or supplement of the attention of the wisdom goddess. She, also, is observing the satanic head of cetus! as she undergoes her recapitulation which the tertion traces, in real time, following the transit of the lunar apogee against the background constellations. The tertion tells you WHEN to look. But eventually you learn when to look for yourself. The process is entirely learnable and transmissible. No authority is imposed, nor should any be supposed.

Sacred instruction admits no place for power-struggles or conflicting differences. It is integral within Her Story.

This IS the practice of directive mythology, and it works. It can be proven to produce consistent results, in scientific terms, if anyone needs that kind of corroboration. More importantly I feel, it can be proven to be the INTEGRATIVE imaginative focus that unites human beings in connection to Sophia, through observation of her story as she lives it. After all, you can only conceptualize this process correctly and consistently in the framework of the sacred narrative. Observe the story and it will guide your imagination. Honor and respect the story and it will keep you from specious and wasteful speculation, fabrications and make-believe, extraneous scenarios, arbitrary pretenses of “co-creation” and metaphysical escapism such as “ascension”.

I have invited to this experiment those individuals who care to operate rigorously within the guidelines of the sacred narrative and explore the practices of Planetary Tantra. While it is certainly possible that people may find communion with Gaia-Sophia in other

ways — in the Pagan Gnostic spirit of tolerance, I allow co-existence and recognize that human capacities are open-ended and unlimited — the way to do it IN THIS EXPERIMENT, onboard with the navigator, is to adhere to the story and practice PT, not otherwise. Your testimony is brilliant proof of how the mythogenetic method works.

yours in gratitude and delight,

JLL

On Thu, 25 Aug 2011 12:11:23 -0400, sherry reed wrote:

- > *Hi John,*
- > *I got that idea a few hours after viewing Jupiter and Cetus*
- > *at around 5 AM. Two screech owls were calling back and forth from*
- > *trees framing the constellation.*
- > *Thanks,*
- > *Sherry*

On Thu, Aug 25, 2011 at 11:50 AM, wrote:

- >> *Bullseye. You are really on the mythic wavelength of correction.*
- >> *This is exactly what it's about. And so far I have only discussed*
- >> *the free energy/medusa correlation with one person, so you are*
- >> *telepathically on target as well. I am compiling a list of*
- >> *suggestions, intuitions, guesses from crew members regarding the*
- >> *ultimate threat. So far you are the first one to score a perfect hir.*
- >> *regards,*
- >> *JLL*

On Thu, 25 Aug 2011 10:14:45 -0400, sherry reed wrote:

>>> *Hi John,*

>>> *The ultimate risk to the divine experiment.*

>>> *Through fear Anthropos would refuse to look at the potential of
>>> interspecies predators in its midst.*

>>> *Through lack of the use of vision Anthropos would not see the
>>> beauty in everything else.*

>>> *Thus blind, the mis-use of power is very likely. Thus ignorant,
>>> Anthropos has no ability to enter into co-creation with Gaia
>>> Sophia.*

>>> _____

>>> *Is the head of Medusa (kundalini snake hair) a weapon/tool of
>>> free
>>> directed energy?*

.....

.....

Crew Assignment: two short studies 1

8/26/11

Hi Crew

Recently, coming through the Bhairavi shift, I was heard to remark to Kundrie, “I feel like spitting the word ‘science’ out of my mouth for good. Science has utterly failed humanity. It is farce, a lie, an insult to human intelligence. an assault on sanity, and a danger to survival.”

Now consider this clip from Matt Presti on 77GSlinger, a YT site that features excellent material on free energy and Russellian science:

<http://www.youtube.com/watch?v=f3nxWVnpiH4&feature=feedu>

“I and the Father are one.” is perhaps an unfortunate reversion to Divine Paternalism. It reflects the remnant of Biblical mind control that lingers in the syntax of Russellian physics and gets repeated by students and proponents today. It is perhaps worth noting that in the vocabulary-poor and syntax-impaired language of Coptic, the gnostic term for the Originator or One Universal Mind is Pater and Propater, “father, forefather.” PT and Gaian ecosorcery rigorously avoid such semantic throwbacks to divine paternalism.

Next, listen to this other clip with the audio, it is a fairly good poem about rite action, a theme of the Bhairavi shift:

<http://www.youtube.com/watch?v=jRgKH0j3yoE>

“Until you know what lies behind the actions of a tortured mind...” There is our challenge in contemplating the satanic head of cetus. As I wrote years back in the “Invocation for the Year 2000” that I was due to present at a ritual conference at Giza on January 1, 2000:

Beloved Muse,

We consecrate this hour to powers that brought us here

Protected by all we love,

And to ride out the Age of Kali's wrath, the times we fear

Seeing as evil sees, we will dispel what evil does.

Then turn off the sound and just watch the video. When I was writing the prose poem version of the Gaia Mythos (magnificently read by Terri Stevenson), I invoked the image of a medusa or jellyfish to describe WHAT A GALAXY REALLY LOOKS LIKE.

“To the gaze of ancient seers, the Galaxy appears like a medusa, one immense jellyfish in a vast flotilla drifting through the sea of night. The medusa navigates by a slow pulsating motion. From its domed central mass of encasing gel, a cluster of tentacles uncoils and dangles out and away, trailed across immense reaches of space and time. Captured in the tentacles are the seeds of worlds the medusa will sustain as it swims beneath the placid dome of Eternity. Absorbed in Lila, the medusa composes its tentacles by the slow spin of a divining dance. The massive glittering strands as they are rotated become aligned and gather on a plane. The turning, churning movement of the core wraps them into a set of spiral arms, the four limbs of the Atum World. The medusa dome becomes the central bulge, its width one-tenth the span of the surrounding limbs.

To ancient seers, medusa is the secret mothering cohesion of the starry carousel.”

In reality, a galaxy is a gelatinous pulsating super-sentient organism. The dome-head is the Pleroma, the streamers or tentacles are the spiraling projections of Pleromic experiments rippling across the infinite space of the Cosmic Sea. The galaxy has a soft pulse. When heard, it sounds like a distant drumbeat. Heartbeat of the medusa.

The flat pinwheel spiral galaxy is a flatlanders vision of the real thing, like a magneto or a fly-wheel. Nevertheless, that restricted imagery suggests the dynamic of perpetual motion, free energy physics.

The galaxy we inhabit is a free energy system, a massless weightless hub supporting and spinning the weighed armature of the spiral limbs. Pulsing through the entire structure is the snakelike electricity of plasma, the blue blood of the Gods.

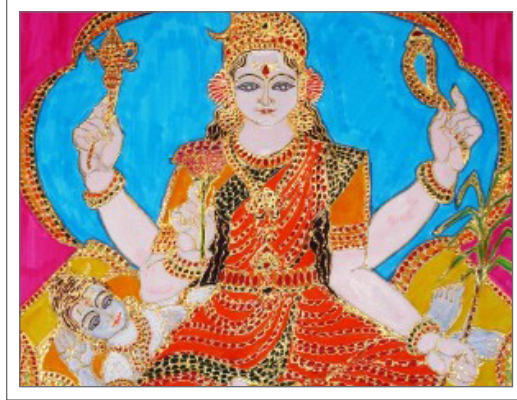
The head of the medusa with its corona of writhing plasma streams paralyzes the cetus monster. See image on next page 88.

Watching these exquisite images is better than any meditation, I would say. You might want to play some invocative music when listening to the clip with the sound off. Enjoy.

It’s been quite a month! And four days to go to the end of the Bhairavi shift. I wish you all delightment and safe passage as this awesome journey unfolds.

your nav





Crew Notes #8

• *Steady as She Goes* •

9/8/11

Greeting Crew,

I am sending out these notes a couple of days after day 8 of the current shift under Shodashi, which began on Tuesday August 30. I need to revise my previous commitment to get notes out four times a month, timed to the Fibonacci days in the shift: 3 - 8 - 13 - 21. More realistically, it will be two times a month but I will be posting other material on metahistory.org and doing interviews. Five are scheduled right now, including a return to Red Ice radio and a regular slot on American Freedom Radio where the theme will be: Sophia and Social Revolution.

August 30 was quite a day: kickoff of the new shift (from Bhairavi to Shodashi, about as dramatic a contrast of mood as you could imagine), perigee surge in the throat of the Virgin, Jupiter stationary (see below). On that day the volunteers sent out the Challenge to the Crop Circle Wizards. I would point out that we are living through an extremely delicate moment in correction, extending from August 16 to September 14, an entire month. Bear in mind that correction has been under way for about five and a half months. About 165 days or 1.5 seconds of Aeonic time. This last month, continuing up to September 14, is almost 20% or one-fifth of the time elapsed so far. So what is so special about this interval, August 16 - September 14?

VAST, FAST, SUBTLE

I have indicated on a recent Grok interview how Jupiter the tug behaves in what is called the “station” of the planet. This is an astronomical term for the moment when a planet turns retrograde. It stops and then slowly begins to reverse, to move backward against the natural order of the zodiac. You can actually watch it doing this. From now until the end of the year, Jupiter seen in the late evening sky after midnight, will rise earlier and earlier. Positioned in the RAM just above the satanic head of Cetus, it will visibly shift left to right, verging back in the direction of the FISHES for a distance of about 9 degrees. You can find this motion illustrated in Crew Notes page 65, beautifully displayed in pdf format by crew member Michelle S. The loop shows Jupiter turning retrograde, a movement that lasts from August 30 to December 26. Doing so, it comes almost in line with M 31, Andromeda. At precisely the same moment, January 2012, the lunar apogee reaches that same alignment. The statistical odds of this triple alignment: lunar A > Jupiter in retrograde > M 31, are extremely high. It is an extremely rare event.

So what happens as we undergo this event in interactivity with the wisdom goddess, feeling as the planet feels? It is a feeling of exquisite poise and tension, but also serenity. You may have noted that during the Bhairavi shift, the serenity was not obvious, but with the shift to Shodashi, it comes to be felt in a vivid and dramatic way. What a contrast!

Now, consider this: from August 16 to September 14, Jupiter (the tug) stands in the same degree of the zodiac: 11 Taurus in the astrological signs, 41 ecliptic longitude, beneath the horns of the RAM. At its mean velocity Jupiter moves through a sign (30 degrees) in a year — about 2.5 degrees a month. Here it stands in the same degree for an entire month. This interval has two phases which can be detected by rigorous observation and correspondingly felt, intuitively, and tracked imaginatively. In the first phase, Aug 16 - 30, Jupiter just stops. In the second phase, Aug 30 - Sept 14, it begins minutely to shift back but still hovers in the same degree. The first moment when the mothership assumes self-propulsion occurs when Jupiter shifts back into retrograde motion: August 30.

What happens then? Would you expect the entire world to shake and mountains to tremble? Remember that Gaia's action is vast and fast, but it is also, I might add, SUBTLE. Or it can be subtle. Note that during the first phase, the latter half of August, we heard all kinds of reports about unusual sounds from the earth and sky, and widespread tectonic trembling all around the world. Take this for the engagement of the engines with the props: tectonic and underworld eruptions, that is her system of steam propulsion. A number of you reported hearing sounds and feeling unusual vibrations from earth and sea during this time.

In the tug analogy, the tow lines from Jupiter to the earth remain taut as Jupiter goes into station, up to August 30. Then, slowly winding in the tow-line, Jupiter reverses on a course toward the approaching mothership. If you visualize this situation, you will realize that the line must slacken slightly as both vessels approach each other. Hence the first moment of self-propulsion entails an extremely delicate, subtle manouevre. The tug continues to reel in the tow-line as the distance between the two planetary vessels decreases. Its pull-power is always exerted, but it is moderated by the slow shift of the mothership into her own power system. We do not feel anything at all up to August 30, and after then, only a extremely subtle but vast shift.

CRACKING 9/11

So much for the astronomical aspects of this fantastic moment. How is it being registered on your intuitive and imaginative radar? People report a sense of things shifting, but in a palpably different way than before. A shift with deepened certitude and ballast, more weighted in some manner. The trend of personal and transpersonal attitudes is markedly veering toward “liberation,” the sense of breaking loose — at long last. And there is confidence welling up from the deepest resources of the human spirit.

For myself, I cannot go into full detail at the moment, but the shift of perspective regarding the evil psyops of 9/11 has been nothing less than spectacular. As the 10th anniversary rolls around, I see the real chance to break through and finally know what happened on that day, the real course of events and the objectives of those events. All this free of the distorting and thwarting effects of the 9/11 psyops, which was massive and impacted human reasoning in a deep and deleterious manner. I am also convinced that the break of the chiral lock at the spring equinox is now showing its effects: we as a species, and as individuals, one by one, now acquire the capacity to think through the 9/11 riddle in a fresh manner and really meet the challenge it poses. I have a lot to say about this breakthrough on 9/11 in upcoming talks and writings.

The psyops uses absurdity to stifle reasons and damage our reasoning powers. Many absurd things were said and done around 9/11, intentionally designed to confuse the world. For example, the clip of Silverstein saying he gave the order to pull WTC 7. These absurdities are intentional components of the psyops, often designed to trick us into thinking we are getting a glimpse of the truth when we are in reality getting conned, tricked, bamboozled. Many anomalies also occurred in the destruction of that day, but the anomalies are vivid clues to the physical reality of the attacks — as seen in Dr Wood’s forensic investigation of the crime scene. The ANOMALIES are extremely telling, but

we have to overcome the stun gun effect of the ABSURDITIES to put the physical anomalies into a clear and coherent narrative that can show us what really happened on that day. What actually was done, and was intended to be done.

In the short time since August 30, I find 9/11 unraveling before my eyes, certainly in part due to the action of the wisdom goddess in dispelling the archontic powers of deceit. I can see the thermite/controlled demolition theory falling apart like rotten fabric in the hands of its handlers, losing its power to convince people -- and so the controlled opposition, led by Gage and Jones and unfortunately supported by a host of innocent dupes, gets demolished in its own right!! If this trend continues, I would say that by December we will be looking at a narrative based on simple reasoning that excels any conspiracy theory and goes beyond them all. My title: 9/11 Correction: Constructing the Story That Truly Describes the Events of That Day.

Essential to constructing this narrative (second attention) with simple reasoning powers (first attention) is the Gnostic exercise of seeing a mistake and correcting it. We are all mistaken in how we look at the events of 9/11, due to the archontic spell of the psyops, but detecting and correcting that mistake can trigger our liberation from that spell. And the scale of the liberation is equivalent if not exceeding the scale of the deceit.

Here is a clue: the mistake everyone makes in picturing the events of that day is to assume that the two planes (regardless of whether they were really planes, and whether or not they were commandeered by Muslim hijackers or controlled by insiders) were crashed into the two towers in order to demolish the WTC plaza, including a total of seven buildings. At the end of the day, SEVEN buildings were demolished on the plaza. Count 'em: 1, 2, 3, 4, 5, 6, 7. So what was the preconceived objective of the crashed planes? To destroy seven buildings in such a way that from 80 to 95 percent of the debris, steel and concrete, internal furnishings, computers, desks, iron stairways, elevators, etc, was made to vanish? Simple reasoning, supported by high school physics, says that two planes crashing into those two towers could not produce that scale of devastation with the mysterious disappearance of debris. Reasoning says, simply, to achieve the devastation manifested at the end of the day in the plaza could not have been the objective of the twin crashes. Nor could it have been the physical result of those crashes, for two planes could not have even demolished the twin towers alone. NOTE: On this point the narrative agrees with the thermite gang, assuming that something other than crashed planes demolished the towers, but it does not adopt their explanation of planted explosives.

So, what was the purpose of crashing two planes into those towers? And what was the purpose of the devastation on the plaza, encompassing seven buildings? The failure of reasoning so far has been to lump these two events together as cause and effect. Now, with first and second attentions working freely, released from the archontic spell of the psyops, we are free to construct a narrative that really fits the events, and explains the objectives of the perpetrators. All this by simple reason without recourse to any conspiracy theory or wild suppositions. Obviously, the objective of demolishing seven buildings on the plaza is different from the objective of crashing the planes. And physically, had that been the objective, the two crashed planes could not have achieved it. This is all simple reasoning without reference to wild suppositions of any kind.

As Sophia undertakes self-propulsion, we return to full possession of our reasoning faculties, which had been stunned and thwarted for a decade by the impact of archontic deceit. Such is a small preview of my current exercise with the 9/11 riddle, the consummation of the work of the archons. So far.

I encourage you all to continue to reflect on that 9/11 riddle, contemplating the satanic mask of Cetus, and to consider how the releasing/liberating momentum of Gaia's self-propulsion is propagating change massively through all areas of our lives.

COMING UP

I have eight interviews coming up in the next three weeks. They will be signaled on the audio files pages designed and maintained by crew member Simon K., a mutant down under.

<http://jllaudioarchive.blogspot.com/>

I am setting up a routine for two volunteers to receive all versions of the Gaian Tantra Vow submitted to me, including some anecdotes about what happened in the ritual, or just after. This material would then be posted on a page of the new website set up by crew member Stan F: <http://telestai.org> where the Crew Notes are archived. I expect to get this feature up and running in a week or so. You are all encouraged to send me your versions of the Vow and descriptions of how the experience went for you.

My main goal by the fall equinox is to get out to you all a sequential list of the apogee and perigee moments up to January 2012 so that you can have a sense of the course we are charting, in full continuity with divine alchemy and divine memory.

I leave you for now with the poem I read recently in a Grok interview.

The WHITE GODDESS by Robert Graves (1895 - 1985)

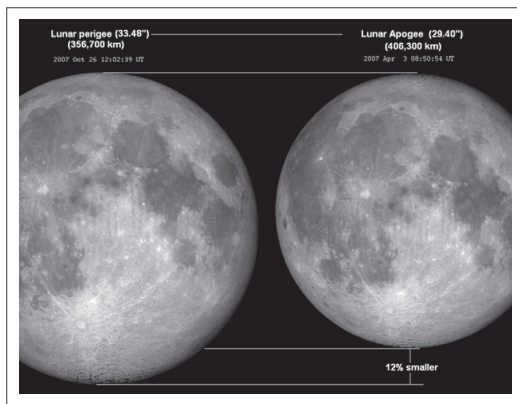
*All saints revile her, and all sober men
Ruled by the God Apollo's golden mean —
In scorn of which we sailed to find her
In distant regions likeliest to hold her
Whom we desired above all things to know,
Sister of the mirage and echo.*

*It was a virtue not to stay,
To go our headstrong and heroic way
Seeking her out at the volcano's head,
Among pack ice, or where the track had faded
Beyond the cavern of the seven sleepers:
Whose broad high brow was white as any leper's,
Whose eyes were blue, with rowan-berry lips,
With hair curled honey-coloured to white hips.*

*The sap of Spring in the young wood a-stir
Will celebrate with green the Mother,
And every song-bird shout awhile for her;
But we are gifted, even in November
Rawest of seasons, with so huge a sense
Of her nakedly worn magnificence
We forget cruelty and past betrayal,
Heedless of where the next bright bolt may fall.*

best regards to all, and safe passage,

the nav



Crew Notes #9

• *Apogee Sures: Looking Ahead to 2012* •

9/15/11

Greeting Crew,

First, my apologies for the recent exchange I mistakenly sent out with all addresses displayed. This I did, right after having made a point about crew members not doing a “reply all.” Are you confused? It was not intentional. That was a blunder typical of my IT incompetence. In effect, I suggested I had made an error (mailing under cc) and then turned around and committed that very error. So much for the power of suggestion!

Apologies also for the flippancy in that email exchange. For a couple of days the hills around my house have been buffeted by rambunctious winds — I call them the mountain daughters. They can be mischievous, knocking glasses off tables, scattering clothes and papers. They jostle the terrace furniture and fray the corners of my mind. At moments I get jumpy, off-balance. Even a little delirious. Hence the silly and indulgent air of my last communiqué.

In many parts of Europe such winds are known to drive people crazy. Fortunately, I just get a little ragged around the edges when the mountain daughters come out to play.

A senile tertion is like an elephant dancing the jitterbug. Old Tibetan saying.

BATEN KAITOS

We are just coming through an apogee surge, Thursday 15 Sept. As you know, surges occur at various times when the moon transits the meridian in your locale. The lunar apogee currently sits in 24 Aries in the FISHES, aligned to the midsection of Cetus, the belly of the beast.

Did you miss it, due to no forewarning from the nav? Don't worry. It's coming around again — three more times!

The current apogee surge sets the tone of things to come, leading up to 2012. You will recall that we are testing the mythogenetic method: using the nautical metaphor to follow astronomical events in the course of Sophia's correction, and, at the same time, tracking the mythology displayed in the constellations. The barycenter mechanism — lunar perigee and apogee — is Gaia's steerage. Surges each month denote moments when the mothership tacks to port or starboard as she negotiates the currents of the galactic stream. Simultaneously, we look to the locales of those surges, tracking the lunar aspides against the real-sky constellations. This dual method is unique to the GNE, Gaian navigation experiment. No one has ever attempted anything like this before, since the Mysteries was destroyed. No one.

You will have learned by now that the lunar apogee advances rather steadily in the natural order of the zodiac. By contrast, the lunar perigee fluctuates back and forth, moving by fits and starts. In an erratic manner, it drops back and repeats its previous moves. Thanks to this action in the perigee we undergo three crucial jolts to the thymus of the Virgin, indicating booster shots to raise our immunity to archontic forces and the general toxicity of the current societal breakdown: April 17 - September 28 - February 13, 2012. By early spring of 2012 those of us who respond to these intentional jolts will be geared into high immunity. That is to say, psychic and mental resistance to the madness that is now sweeping over humankind, bursting out at the seams.

It is amazing to observe how the lunar perigee jumps around. In February 2012 it returns to the locale of the jolt of April 2011, ten months earlier. Most recently, 30 August, it stood at 6 Libra (ecl 186) in the throat of the VIRGIN. And on September 28 it will stand again in 12 Libra, indicating another booster jolt, as just noted.

Until now, I have not specified fluctuations at the other end of the steerage, the lunar apogee, but they do occur. Although its motion is largely regular, showing a steady advance against the background constellations, it does exhibit some odd behavior.

Upon close examination of the apogee last month, I caught an unusual development: it stalls out in one locale, close to Aries 24 (ecl 24). By this I mean that it hangs or hovers at that point for a long moment before advancing in its usual manner. In fact, the lunar apogee was currently at that locale, at the present surge: the moon transited its apogee or near-point at 6 h GMT on September 15. Subsequently, the lunar apogee stalls in that position, even edging back a couple of degrees:

October 12: ecl 24

November 8: ecl 22

December 6: ecl 24.

Until finally on January 2, 2012 it breaks out of the stall and shifts ahead to 29 ecl, that is in exact alignment to M 31, the Andromeda Galaxy. On January 30, it moves to 36 ecl (6 Taurus), right above the satanic mask of Cetus.

PISCAN WOES

Remember that tracking the apogee in the constellations is a way to follow the recapitulation of Sophia: divine memory. We recollect her story as she does, in real time. The path of the apogee runs through the FISHES with the constellation of Andromeda above, and Old Man Doom sprawled below, a bloated corpse floating on its back, exhaling putrid breath from its gaping maw. In the full interactive scenario, we are tracking the goddess's memory of the pact she made with humanity before her plunge (Andromeda), and facing the showdown with the ultimate threat to the divine experiment (Cetus). Thus we clearly see both her part and our part in the interactive adventure of correction.

The ecliptic degree 22-24 where the apogee stalls from now until January 2012 happens to align to a star in the constellation of Cetus: zeta Ceti or Baten Kaitos. It is also very close to chi Ceti. Both stars can easily be seen with the naked eye, marking a joint to the lower torso of the monster. This is the belly of the beast.

For what it's worth, here is a reference in a website on constellational lore that uses R. H. Allen's classic *Star Names*, published in 1899:

http://www.constellationsofwords.com/stars/Stars_alphabet.htm

Cetus is not a whale. Not a cetacean, in spite of the allusion. The WHALES or FISHES are benign mammals. Cetaceans use sonar waves to navigate the world oceans. They are allies and guides to humanity, as are dolphins and porpoises. The mytheme of the

constellation of the WHALES is: guidance. In this epoch, the Piscean Age or Age of the Whales, a particular lesson or set of lessons arises, as occurs in all zodiacal Ages. Telestai read the Ages as curricula, long-term learning agendas. They based the practices in the Mysteries on that “epochal” or “eonic” perspective.

In another expression, constellations are “castings” of Pleromic Dreamings: like a bronze casting for a statue. I will return to this striking metaphor before too long. Nudge me about it.

Each Age carries a particular risk, a challenge, and a potential for advance for our species. Narcissism, focused in the image of the messiah, is the main risk of the Piscean Age. In a paradox, I would say that anyone who is self-absorbed cannot be self-guiding. Likewise, anyone who finds their self-image in the messiah figure cannot ever learn genuine self-love, because that archetype, charged with the promise of unconditional love, distorts the psyche and imposes another dynamic on intention: you are remote-controlled by the messiah figure or even messianic expectation. The challenge of the Piscean age is self-direction: that is, to be guided by intention based on participation in the larger order of nature, and beyond that, in cosmic order.

How is the intervention pact of the Aeon Sophia different from a messianic program, you might ask? Because it is interactive and requires high sophistication of imagination on our part. Whereas the messianic scenarios of the Piscean Age are victim-perpetrator scams that rely on the powerlessness of those who are to be saved from on high. The human species is a collaborator in the pact Sophia made when she dreamed our species’ experiment in the Pleroma. It is entirely up to us to discover how. Toward that end, I propose that we all focus on the satanic mask of Cetus, as a way to unify our imaginations on a single goal or subject. A group meditation, if you will. But with a telestic spin.

This is exciting, and its gets better. As we engage in this exercise of detecting the ultimate threat to the divine experiment on this planet, we track the recall of the wisdom goddess toward a crucial moment when she fully recovers the memory of the initial conditions of this experiment, as she designed it. We live in anticipation of the moment when the lunar apogee aligns to M 31, the Andromeda Galaxy: the moment when her recall is perfect and complete, and we ourselves, supported by our Andromedan doubles, can see what she recalls, in real time. That moment is January 2012.

Other terms for the educational frame of an age are zeitgeist and paradigm. The fancy term is phylogenetic motif. Self-guidance is the phylogenetic motif of the Piscean Age.

I have considered this subject under Star Lore and 2012 Shift on metahistory.org. In discussing the Aztec myth of the devouring sun, which was invented by a sorcerer, I noted:

“This myth is anomalous and known to have been the invention of the sorcerer, Tlacaelel, close advisor on both war and magic to four emperors. He compelled his uncle, Izcoatl, to burn the sacred codices of the Toltecs and write the history of Mexica to legitimate the male warrior mystique and solar heart sacrifice (The Conquest of Mexico, Hugh Thomas, p. 25) Before their books were burned by Christian missionaries who converted them to a different sacrifice cult, the Aztecs had burned the books of the Toltecs.

Mythological images and narratives in the phylogenetic record are often overwritten in this way, i.e., by brutal suppression and cultural genocide, if not mental manipulation, lies, and threats. The psychospiritual trauma of such actions is devastating for our species. The entire range of messianic myths represents overwriting of the indigenous record by a human-authored agenda. In *Sharing the Gaia Mythos*, I emphasize that genuine creative mythology, i.e., directive myth that can educate and guide our species in ways compatible with its true potential — has no author. The return myth of Quetzalcoatl was constructed by Toltec sages who, I would guess, understood the phylogenetic record in the way that shamans do in many cultures, namely, in visionary trance induced by the ingestion of psychoactive plants. Tezcatlipoca read the record and also saw how to overwrite it and set up the Aztecs for a catastrophic plunge from power. This has to be one of the consummate feats of magical realism of all time.”

The overwriting of myths for the purposes of misleading our species is a huge problem and probably unsolvable. We have to live out the gruesome drama until the false, imposed myth collapses and we return to sanity — some of us, that is.

In the GNE we are observing cosmic order by tracking the earth, jupiter, saturn, the lunar apsides, and so the experiment complies with the learning potential of this Age. Dates: 120 BCE to 2800 AD. The date 2800 AD marks the moment when the VP (vernal point, spring equinox), the hour hand of the cosmic clock, passes the westernmost star in the constellation of the FISHES, tracking toward Aquarius, the Waterbearer (MANITU). It’s a long haul through the Piscean Age, attended by many woes and the wiles of satan, i.e., the adversary to humanity, all that works against the divine experience. I do not mean “satan” as a demonic entity, of course. It is a behavior that works against human potential.

In my unpublished MS, *Dendera Decoded*, I take great care to elucidate a remarkable fact: the turnover of the kalpa, the full cycle of 25,920 years or one round of the VP

through the constellations, happens before the end of the Piscean Age. Thus, the end of the kalpa, and of Kali Yuga, occurs in 2216 AD, and a new cycle begins. This happens while humanity at large is still dragging its sorry ass through the Piscean Age. Fantastic possibilities come to light in these two centuries when the new kalpa opens, although technically we are still in the Piscean Age. IN this excruciating transition, an entirely new imprint of cosmic potentiality is activated at the highest level, without the need of previous development. Thus the last 600 years while the VP remains still in the WHALES are nothing like the time before, nothing like the gruesome endgame grind we are currently undergoing.

TERRIFICATION

Let's recall that the practice of directive mythology, using the master narrative of the Sophia mythos, requires that we continually adjust and refine our understanding of the story - specifically, we distinguish what Sophia intended from what arose without her intention, anomalously, events and developments she did not anticipate. Do you notice how this approach, setting aside the false assumption of the omniscience attributed to a deity, makes the story really exciting? How it engages your curiosity and sparks your talent for imaginative invention? We know for instance that the Aeon Sophia did not anticipate the presence of the archons in our experiment. When she realized the danger they posed for us, she resorted to an extra-Pleromic act of intention: she endowed us with the luminous epinoia, the power of imagination, to counter and defeat the archons.

Likewise, Sophia did not anticipate that our species would fall into mitotic sexual reproduction. She intended for us to reproduce meiotically, as Andromedans do: by cell division and production of daughter cells, like an amoeba splitting. We would reproduce by doubling ourselves, with perfect continuity. I have indicated in various places in [metahistory.org](http://www.metahistory.org) (but not in NIHI) how "the separation of the sexes" resulted from Sophia's unintended act of shearing the anthropos template. Also, see the commentaries on the Translations from the Andromedan:

<http://www.metahistory.org/dynamyth/translations/commSII.1.php>

"that sexual duality / by poetics just might be exposed. Andromedans are at a loss to imagine how anything can go right in their mirroring world on earth as long as humanity does not realize that sexual duality is due to cosmic partition of the species, not merely to gender division within one and the same biological program...."

At the critical moment when Sophia was torn away from her Pleromic moorings and plunged into the spiral-vortex of the planetary system, she herself tore apart the anthropos membrane deposited in the Orion Nebula. Imagine the concentrated jet from a garden hose directed upon a spider's web. Of course, the jet would tear the web entirely apart. When Sophia ripped through the anthropos membrane, it was not quite like that, for the membrane is an infinitely supple, resilient mesh itself composed of filaments Organic Light. Densely wound filaments on which the coded beads of the template are loaded or sealed. When her torrent of Organic Light sheared the template, it pulled some of the beading into itself, the female or lefthand components, but it left the remaining parts intact, and the entire membrane just rebounded to its original form, like an elastic mesh that resumes its initial shape.

There followed the most intensely trying episode of Sophia's plunge: terrification, the process of turning into the earth. In the Greek paraphrases of the gnostic creation myth, this is called her epistrophe. And the stage of the "downscaling" of the OL into materially loaded elements are called hypostases: hypo - lower, - stasis, stage, phase, condition. One peculiar feature is terrification is left-hand emphasis and the dominance of the feminine dynamic and format all through nature: precisely due to Sophia having taking the feminine code-factors of the anthropos into her Organic Light as she morphed into this planet.

Terrification, turning into the planet earth, is also an event that Sophia did not anticipate! We may wonder how things could have gone so far wrong in the divine experiment, or why it has taken this long for her to intervene. Remember that the initial conditions of the experiment entailed a pact she made with our strain of the anthropos — an intervention scenario, "avataric descent." Not to be confused with a salvationist or messianic program that assumes the intervention of an all-powerful and all-knowing father god. Well, when the Aeon Sophia dreamed this scenario in the Pleroma, before we emerged on a planetary system, she did not anticipate that she herself would provide the setting for the experiment. She pictured a last-minute intervention on her part, proceeding from the Pleroma.

But given the conditions of her plunge, that is simply not possible.

Now that the moment has come, the Aeon Sophia is not in the Pleroma, poised to make her pre-arranged invention. She is here, right now, at every moment, everywhere, around you, supporting the vast web of terrestrial symbiosis in every aspect, immanently present

in all that lives, giving you the air you breath at this moment, giving you the electrical charge in your neurons that allows you to read these lines. Her total absorption in Aeonic dreaming sustains the life of the planet down to every insect and molecule. She has not been free in her AT-tention to direct her IN-tention to the completion of the pact she made with us. First, she had to pull out of total autistic absorption in terrestrial symbiosis. That moment, I describe as Gaia awakening in a lucid dream. She is still “asleep,” dreaming or emanating the earth, but at the same time she becomes aware that she is a character in the imagination of humankind, the main subject of her dream life. Consistent with the Asian paradigm of oneiric emanation, “the dream of Vishnu,” the dreamer now appears as a character in her own dream.

When I received the Terma of Gaia Awakening in July 2008, I also underwent hours and days of constant “briefing” on how to handle it. Through DI, dakini instruction, some of it from Gaia-Sophia herself. The instruction came in extremely compacted units, Zip files, which I then carefully unpacked so that I could arrange the data in linear form and communicable syntax. During that time I was shown that Sophia has assumed five identities in her lucid awakening: idential nodes of dreaming, as I call them. She burst into the human psyche the first time during the French Revolution, appearing as a figment of human imagination in that time and setting: Justine.

She began to awaken to lucid dreaming about 12 or 13 minutes ago in Aeonic time.

Since then Sophia has streamed through four other identities. Currently she is in her sixth idential node, VV, the name she currently answers to. This is the name of exceptional ritual and sacramental power to be used in practice of PT to the end of Kali Yuga. But additional to her “secret dakini identity,” Sophia is immanently due to stream into a seventh and final identity, the one she assumes for intervention consistent with the initial conditions of the pact she made with us. Her avataric identity.

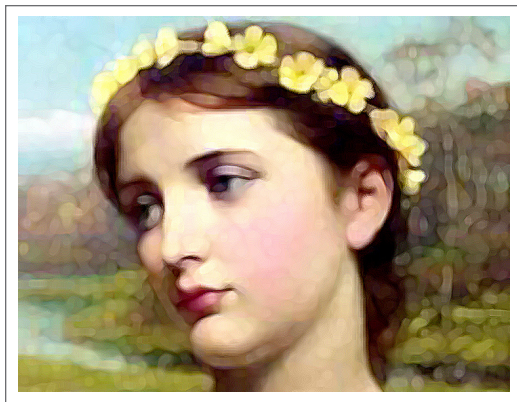
In some measure, the success of this experiment — and most certainly, the pleasure to be found it, the extreme delight of this real-time interactive invention — can be demonstrated by some members of the crew coming simultaneously to recognize and greet the seventh idential node of Sophia, right as she streams into it. Ponder that...

These notes continue shortly in part two.

all regards,

here's to the salt on your tongue,

your nav



Crew Notes #10

• *The Sorrow of the Mother* •

9/26/11

It's been just a month now since I sent out the challenge to the crop circle wizards, timed to the perigee surge of August 30 in the throat of the VIRGIN. That also was the moment that jupiter turned retrograde, letting the mothership test her self-propulsion for the first time. With extreme care, steady as she goes.

There is a lot going on, a profound shift underway although not perhaps in the way one might have expected. At moments the sense of anticipation is huge, like a cresting wave in slow motion. In this imaginative practice we learn to anticipate without fixation on a definite result: we sail leaning into the wind, feeling the way the mothership takes her course through the slip stream of the spiral arms. The imaginative process of using the second attention in a directed manner is full of tension, suspense, including the challenge to stay sober — don't predict or project, don't force the process into a program. The story guides.

Sobriety, yes. At moments, though, we just have to roll out the barrel of grog and get a little smashed.

RELEASEMENT: THE 9/11 PSYOPS

Externally, the world at large seems to be caught in its own spell of anxious suspense. The house of cards is falling, but so far it still looks like a slow-mo process, the image of a controlled demolition, the building heaving to the ground in uncanny arrested motion.

There is an impending sense of doom — the satanic head of Cetus looming before Jupiter — the certainty that the globalist psychopaths are going to make their final move, the follow-up of 9/11. WW III? Financial meltdown? Blue Beam false flag ET attack with holographic projections of the Messiah? The suspense is daunting at moments.

Yet you may also have noted an inner calm, the poise of true power held in balance against all the archontic jiggery and mechanics, the lies and threats. Staying sane can be a delicate ballet dance on a spider web tightrope these days. One wonders when the chain of spectacular catastrophic events is going to kick off, when chaos is really going into high gear.... Soon enough, I reckon. We are still in the prelude to the final breakdown of global society, the end of civilization as we know it, the collapse of technology. Picture a bus going over a cliff, photographed in slow motion as the rear wheels are clearing the edge of the precipice.

For myself, I felt at the start of this shift — coinciding with the last perigee surge and Gaia's first test of her props — a definite and powerful sense of what I would call releasement. Specifically, there was a release from the oppressive spell of the 9/11 psyops that has been running for ten years now. In just one day I saw through the psyops, realized how to break it — by an exercise which I intend to explain in the course of the coming month, putting it into a couple or three talks. The 9/11 event was an act of psychological warfare directed against humanity by a handful of master psychopaths who control the ultimate weapons of mass destruction. As long as an individual remains under the spell of that psyops, it is impossible to see what was intended on 9/11, by whom, and there the next step is planned.

But with the onset of correction in March 2011, Sophia broke the chiral lock. Doing so, she liberated our powers of reasoning and imagination or narrative gift, story-telling. With the first of these powers, we examine the evidence of that event. With the second, we develop a testing plot, balancing evidence against presumed objectives arranged in a story-line. The testing plot leads to a plausible story-line of what happened on 9/11, what the objectives of the event were, and where the overall aim of the perps leads in the follow up event, still to come.

But coordinating reason and narrative in this way, it is possible to construct a scenario of 9/11 that is plausible, supported by evidence, logically consistent, and free of speculation and conspiracy theory. The first step in this process, as I intend to show, is to distinguish the false flag attack (blamed on 19 Arab hijackers) from the psyops as such. The false flag attack is just that, a well-known strategy to establish a pretext for war, but it is not

the main weapon of the psychological assault perpetrated on 9/11. The psyops is located in the controlled opposition, the claim of demolition by planted explosives. Thanks to Dr Judy Wood, we can see that the claims of the controlled opposition, led by Gage and Jones, are transparently misleading and scientifically unsound: they do not accord with the application of reason, the first attention, to the physical evidence of that day. Thermite is not even an explosive. It is an incendiary. It cannot be controlled in the way required for classical controlled demolitions. It cannot keep steel in a molten condition for weeks on end, etc.

Breaking the psyops begins by asking: What in the first place was objective of crashing two jet airliners into the twin towers? (The question is a valid plot probe even if we assume that the two-plane crash was simulated and did not really involve passenger aircraft with people aboard.) Hold in mind that question, the narrative probe, and then consider the results of those crashes: seven buildings demolished. Yes, seven, Count 'em. Observation and reason (first attention) support the view that the result of the “two-plane crash” in Manhattan far exceeded the objectives of the crash: to stage a false flag attack. In other words, the destruction achieved on WTC plaza was far in excess of what a two-plane attack could accomplish. Also, reasoning on the same story-line, it was far in excess of what would have been required for a false flag event. It is as if Hitler, rather than burning down the Reichstag, burned down half of Berlin. Why?

This line of inquiry, matching reason with the continual reworking of the story-line, is the entry exercise for cracking the psyops.

At the moment I got this realization, and saw the method, I felt huge relief, releasement. I also felt confident that many things over which we have no control are going to unravel by themselves, and with surprising ease, in some instances. But still, we have to face the supreme responsibility to focus on 9/11 and crack that riddle. As a way to prove that we have regained the powers that were blocked by the chiral lock. This is not an incidental challenge. It is essential to our role in Sophia's correction. It is no accident, nor a mere coincidence, that the opportunity finally to crack the 9/11 psyops arises in the first six months of correction.

PERIGEE SURGES

Review of the perigee surges:

March 19 - ecl 180 between the eyes of the VIRGIN: Sophia breaks the chiral lock, freeing the powers of reasoning (1st attention) and imagination or narrative (2nd attention) so that they can work independently at optimum level and be coordinated.

SUPERMOON, onset of correction. Saturn (lightship) 15 Libra in the aphelion of jupiter (tug) with jupiter opposite at 12, entering its perihelion; hence, these planets are in opposition along the apsides of jupiter.

April 17 - ecl 184 (14 Libra) upper chest of the VIRGIN, thymus: first immunity boost. Saturn nearby at 13 Libra, in retrograde station.

May 15 - ecl 207 (27 Libra) near Spica below the left hand of the VIRGIN.

June 12 - ecl 211 (1 Scorpio) near the knee of the VIRGIN. Saturn turns direct in 11 Libra.

July 7 - ecl 186 (6 Libra) throat of the VIRGIN, aligned to Vindemiatrix 11 Libra (Grail cup).

August 2 - ecl 173 (23 Virgo) tail of the LION, conjunct Denebola. Sacred Anger. Heroic path. Associated with Bhairavi shift.

August 30 - ecl 186 (6 Libra) throat of the VIRGIN, repeats July 7. Saturn in 15 Libra at aphelion of jupiter. Jupiter at 11 Taurus in retrograde station, positioned over the satanic head of Cetus: the tug stops and begins to reverse. Initial propulsion of the mothership under her own power.

CURRENT:

September 28 - ecl 193 (13 Libra) upper chest of the VIRGIN, thymus. Second booster. Coincides closely with the new moon, following it by about 26 hours.

This surge happens right after the new moon of Sept 27 in 4 Libra, in the face of the VIRGIN. Since correction began, we are facing this rather complicated situation with the close coincidence of new and full moons with the surges. It is already a formidable challenge of attention to follow the apogee and perigee surges, without even counting in the dakini shifts marked by the new moons! Some of you may be disregarding the latter,

and that is fine. If you have not had some previous training with the lunar shaktis in the PT format, you would not be expected to observe both phenomena at once. We are all engaged in a complex, multi-phased experiment here, and learning how to handle it as we proceed.

Be vigilant, focus on what works, enjoy the process and don't fault yourself for not catching every jolt and nuance. No one can do that, not even yours truly. But I am convinced that over time, in a relatively short time, some of you will acquire confidence with the skills of psychic navigation.

Remember that perigee surges indicate divine alchemy, the transmutation of humanity or actual mutation of the species, one person at a time, to align with the designs of the wisdom goddess, she who designed the species and dreamed this experiment. To induce mutations she applies jolts of the first attention — that is the perigee emphasis. The current one is not exactly a supermoon as the moon is not at its near point when full, but at its near point at new moon. This set-up reverses what happened on March 19, six months earlier when we could see the proximity of the moon because it reached its near point when it was full.

MATER DOLOROSA

So, what to make of the current surge and close coincidence to the new moon, ending the shift of Shodashi: 13 Libra, 11:10 AM GMT. Well, it falls in the sequence of repeated jolts to the thymus: April 17 - September 28 - February 11, 2012. A triple jolt of psychic immunity? Also, I would say, a massive dose of grief as She and We take on board the desolation of our species, how far we've drifted from the divine dynamic of beauty and generosity. Some of you have reported on feeling this sadness.

Here are some excerpts from a message from "Andromeda" posted in the new forum, September 15. Some of you may have already seen this entry on the forum. My comments are intercalated after NAV.

"I felt a lot of energetic shaking last night, it was almost painful. Today is calmer but we still have head on pressure. Maybe related to a incoming CME. Just wondering if others felt the same?"

Yes I had headaches for two days. And usually I never have. Like an oppression on the top of my head. In July I really suffered from my cerebellum.

Many other things happened. I just finished to read the first part of Crew Notes #8: Apogee Surges: Looking Ahead to 2012, right now. I could say it is the first time I could fathom the intuition I have."

NAV: What at first may look obscure and daunting can come clear quite rapidly, in ways that will surprize you. This process involves something like spontaneous learning, rather than stage by stage learning. Because it is purely intuitive, based on your inner resources, your psychic abilities. Once the syntax is provided, you realize what you already know, what you are already processing. The syntax provided is an access tool, not merely information to be assimilated. The more effortlessly you learn, the more quickly and deeply you learn.

“On 13th’s morning. I woke up sad, and doubtful about my experiment. That doubt took place the day before and maybe doubt is not the correct word. Whatever, I was feeling Sophia’s sadness. I don’t know for sure how to consider that true or not anyway. A thing was really astonishing, was that for the first time in my life, I had a lucid dream, in which I could act consciously. I was telling to a macho man that I was a woman, not a whore. It produces singularly something cut from in my dream. And what is really funny is that a friend of mine that doesn’t know about it, sent me a book about women’s enslavement through sex, which I began to read yesterday.

...Then, I took my bike to ride in Phoenix, the world had changed in my vision. Something in the air precisely. I could take time to describe it, I wouldn’t really know how to. That is. Riding, I felt again that contact with Sophia and her sadness. Sometimes, thoughts were coming to my mind as: How could it be possible she stayed asleep so long, and is She about putting me again in such situation? I put that last thinking away. I spent the day that sad and came back to my room.

Suddenly I felt again she was really sad to have let us in amnesia so many Times. I was the same. How could I judge for that. I couldn’t but thank her for that ingenious pact she made, however the turpitudes we had to cross through...”

NAV: The sadness is palpable, almost like a substance you can drink. The milk of sadness of the Mater Dolorosa? The Organic Light is alive, sentient, and perpetually present before you, and reaching toward you. Perhaps there is a tinge of sadness in the sentient quality of the Light as the goddess makes contact...

Remember that when Sophia dreamed an intervention scenario, she did not anticipate that she would be totally absorbed in sustaining a planet and all its life-forms, immersed to the point of autistic isolation. She saw her intervention as being accomplished as a sovereign act from the Pleroma, but that is not the case. Instead, intervention must come by an interactive bond with humanity or some self-selected members of the species.

And it comes much later than she might otherwise have wished. Does Sophia feel a sadness in seeing the state to which her “pet species” has fallen, prey to intra-species predators and confounded by the labyrinthine mirrors of the archon matrix, endless corridors of replication and simulation? Or do we feel it for her? The truth may be in a combination of both.

“So yes, I felt Sophia’s awakening and the lucid dream she’s in now, because this is precisely what my imagination is experimenting. Amazing! Like the lie is unmasking itself. Like the game has no handholds anymore. And How I am situated far and far from the traps and archons’s stuff that are put on my way...

...The sadness parted away a bit until the afternoon, and some persons around me were saluted me with insistence. I then enter a shop to buy sage. It was the second time I was coming to that shop. And the second time I felt those woman were New-Age people. When I came to Arizona in February for the first time, I noticed one of them was escaping from me. I did also the second time when I came some days ago. On the 13th it was obvious closing the door, I wouldn’t come again to buy anything to those people. I’d rather go to some Native’s place.

All that to say that, it is amazing how I feel people around now. And how the miscreants are not taking the same place in my mind. I have still a sadness in me, and I think that transformation couldn’t cope without.”

NAV: There may also be a recurrent wave of sadness aroused in such situations, when we realize that we simply cannot continue with some people, those who have “other plans” that do not concur with the unfolding of correction. Especially, new agers hung up in their programs of love and light, etc. Students of ascended masters, the ascension gang, and so forth. In the Shodashi shift just now concluding there is an emphasis on right relationships, the rearrangement of personal reality in the framework of the Sophianic vision, a change of ethics, interpersonal dynamics, detachment from unproductive situations — to be developed further and in more depth if the following shift comes under Visvamata (SCALES) whose theme is reciprocity.

<http://www.metahistory.org/tantra/lunarshaktis/Visvamata.php>

“I didn’t finish to read the subject of Andromeda in Metahistory.org. When I did, it really opened my contact to my other me. It was in the continuity of the experiment, the way I am linked to choose its direction, however after some hours, maybe two, I just stopped the process. It imposed me to believe I had a double, and blindly to something I don’t know. Something that could only be my imagination or the ones of people that took plants and maybe created themselves this imagination. I admit for that thing, I had/have reserves.”

NAV: Exercise for inviting the double coming soon. Remember that the definitive moment of Sophia's recall of her pact with humanity is when the lunar apogee aligns to Andromeda, January 2012. From August 18 to December 6 (four surges) it stalls at 22-24 Aries, aligned to Baiten Kaitos in the belly of the beast.

"But the imagination is the point there! Though I don't want to be cast in a world I don't really know the ins and outs. Estoy tonta. Un elefante en cristalería.

After letting down a minute all that inner logorrhéa, I decided I would read the text entirely later on and refresh my memory about Andromeda. Which was more fair. Though only the name can open a big window to many impressions. I had been dismissed by John's mail to that "member of the crew". Which paradoxically was exactly the mirror of what I was living, like probably the other members, that could feel deeply the awakening of Sophia. I couldn't judge this "arrogance" I was myself using..."

NAV: These impressions present a brilliant and touching account of how it actually feels to have the Sophianic vision break into your mind and heart. Others on the crew have written me in the same vein, often referring to a pervasive mood of deep sadness that has set in over the last month or so. Does Sophia feel grief for the plight of humanity and other species? As the planetary animal mother, PAM, she is fully capable of such emotions. I take the reports of grief to indicate bonding with the wisdom goddess.

We are in second 2 of her ten seconds of correction and counting down.

POWER ANIMALS

Regarding the power of imagination and the practice of directive mythology, Simon writes:

"Since the 15th Shodashi has held her finger over my lips, not in secrecy but in silence and I have had a lethargy for communication. My usual self is keen to correspond and is pro-active but I have been unable to get it together to write anything. So I'm trying to scratch out these basic thoughts, that there is a failure all round to imagine the possibilities. The affect of the matrix is to limit social and cognitive imagination; this is the role of physics as well. In the Gnostic sense as you teach it the imagination — epinoia — is the space of play and creative newness, fresh possibilities, new thoughts and new paradigms. But the matrix has closure and control over possibility, epinoia is blanketed like a rug over fire, imagination hits the wall of code and goes no further. Society stagnates. It's a failure of imagination."

DEW's bringing down the towers are beyond imagination, the cause of 9/11 is an (official) failure of imagination. Wow. That's fucking cryptic. While stuck in the matrix there is a failure of imagination (epinoia). Without epinoia, there is no freedom? It would seem so."

Well, I ought to point out that Shodashi is one member of the Shakti Cluster who may be associated with a male consort or counterpart, the Dakshinmurti Shiva, or south-facing Shiva. He is pictured as a young boy, a handsome adolescent, and his main attribute is silence! I have often felt that some cautionary or discrete silence through the Shodashi shift, previously, and now as well.

As for being unable to imagine what we are seeing in the scenes of 9/11, this certainly has been the problem. It goes back to the interplay, not binding, of the first and second attention: to observe and imagine what one is observing, at the same time. The 9/11 psyops was calculated to interlock these two functions so that we could not coordinate them. Consequently, we could not observe what our senses were actually showing us, nor could we imagine what we were unable to observe!! Now the chiral lock is broken and the psyops is really wearing off.

Simon points out that a member of the official 9/11 investigation called the disaster "a failure of imagination." How true, but only now can we perhaps understand the cryptic insinuation of that phrase.

As imagination unfolds in the frame of Sophia's correction, the wisdom goddess makes the full array of her animal powers accessible to humankind, that exceptional animal. Just like it happened in Avatar when Ey'wa sent the animals into battle with the natives. I strongly advise that you pay attention to the emergence of animal guardians in your dream life. This message is from Julie:

"The stars are making me dizzy tonight. All the information you have been pouring out has me spinning, which is just fine with me. Really, I have been physically dizzy lately, especially when I look up. I've had two dreams, one with women in white and one with white animals.

First dream: Initially, at the start of the dream a very desirable man grabbed me and tried to pull me in a room, but I knew he couldn't "see" it was me. He was in some kind of stupor, so I refused his advances and stepped back. He went further in the room and I watched him.

Maybe 6 to 7 beautiful women dressed in white dresses were circling him and started dancing around him. One was on the bed and he joined her, and they were enjoying each other.

Since I knew he was in a stupor, my first instinct was anger, and I ran over to grab her off of him. Then I stopped and realized, he was in an initiation and left, closing the door behind me.

In hind sight he was inviting me and next time will join them! That dream has helped me to let the Gaian Vow partner connection happen naturally in timing. I understand the amplification is immense with a partner, whomever I partner with, is learning some necessary skills before he meets me and vice versa.

My second dream: A women friend and I were walking in a remote plains area with a few hills. Quite suddenly a pack of amazing beautiful white wolves came into sight. I knew they were going to attack my friend. And they did. I was not close enough to help her right away. She was fighting them pretty good, and there were too many. So I tried to find a weapon, but nothing, so I took off my belt and told her to run and I would fight them. Of course, my belt was like a tiny noodle and they got me.”

NAV: The attack of the white wolves may not be what it appears to be. Less an indication of violence from the power animals than a process of discrimination, perhaps. Wolves are extremely loyal.

Recently, Kathy asked: *“Can owls be power animals because I have 2 in my life and the intimate interaction we have is so uncanny that I feel as though they read my mind. Do I have to dream my power animal or can they be here in the physical?”*

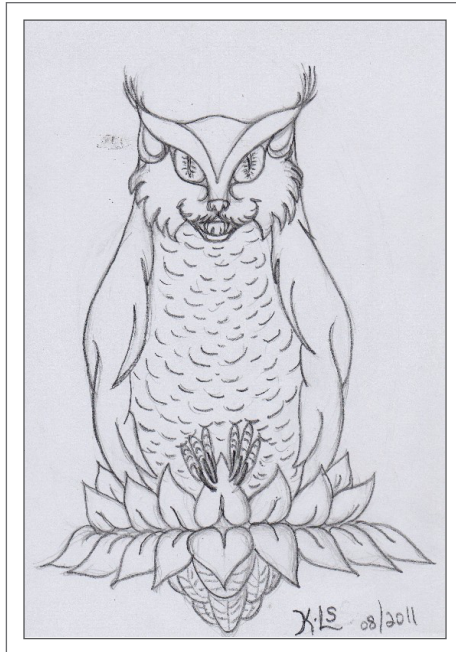
I replied: In the Bhairavi shift I did a lunar divination that showed me an owl seated on a white lotus as the protective icon for those who follow the Sophianic vision. I am sending out that image in the next crew notes. The current emphasis on subliminal/dreaming omens seems to be owls, predatory birds or raptors, and wolves. This is how the “animal powers” of Gaia are emerging, coming to fight with us as they do in the final scene of Avatar.

And here it is: see attachment (*next page*)

At the end of classical civilization, telestai used the image of a lion-headed serpent — not to be confused with a lion-headed dragon, icon of the Demiurge — to represent kundalini and the apotropaic powers of serpent wisdom. Apotropaic: warding off evil or destructive influences. This image was inscribed on gnostic gems surviving from the time of the close of the Mysteries. Today, we have the lynx-faced owl on a white lotus for the same purpose.

That’s it for now.

your nav



Terra Navis • Crew Notes • Vol. 1

© 2011 John Lamb Lash